

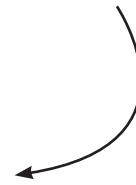
Pollinator Virtual Care Package

We miss all of the people who support us and would like to share our Pollinator Care Package to get you ready for the 2020 Great Georgia Pollinator Census on August 21 and 22.

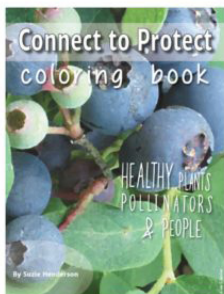
Check out the Great Georgia Pollinator Census page for virtual STEAM activities, powerpoints, insect counting and identification guides, and links to great lesson plans. [Click here](#)

GREAT GEORGIA

Pollinator Census



Fun for Kids



Connect to Protect Coloring Book & Educational Resources

<https://botgarden.uga.edu/education/home-education/connect-to-protect-home/>

UGA Extension-Wildflower Coloring Sheet

<https://extension.uga.edu/content/dam/extension/topic-areas/timely-topics/pollinators/Wildflower-ColoringSheet.pdf>

UGA Extension-Eastern Tiger Swallowtail Butterfly Coloring Sheet

<https://extension.uga.edu/content/dam/extension/topic-areas/timely-topics/pollinators/Tiger-Swallowtail-Butterfly-ColoringSheet.pdf>



All About Pollinators

State Plan for Protecting Georgia's Pollinators

Protecting Georgia's Pollinators is Georgia's state pollinator protection plan created by the University of Georgia Honey Bee Program. Everyone can contribute to pollinator conservation. This publication outlines the role you can play to protect the pollinators of Georgia.

<https://ggapc.org/wp-content/uploads/2020/07/PollinatorBookletforWeb2-2016.pdf>

DIY Nesting Boxes for Native Bees

Most of the focus on pollinators revolves around honey bees, which are native to Europe, Africa, and the Middle East, but not North America, but native bees are very important pollinators. Many native bees are solitary—an individual bee lives alone, rather than nesting in colonies or hives as honey bees do. This publication discusses the importance of native bees and steps a homeowner can take to building a native bee nesting box on his or her property.

https://secure.caes.uga.edu/extension/publications/files/pdf/C%201125_1.PDF



Monarch Butterflies and Georgia Gardeners Brochure

If you are a Georgia gardener looking to conserve the Monarch Butterfly, this is a great place to start. Learn which species of native milkweed are best suited for each region of Georgia and which milkweeds you should avoid.

<https://botgarden.uga.edu/wp-content/uploads/2018/03/milkweedinformation.pdf>

Insects of Georgia: Identification Database

Includes photos, taxonomic information, characteristics, identification features, and distribution of 987 insects found in Georgia.

<https://www.insectidentification.org/insects-by-state.asp?thisState=Georgia>



Gardening for Biodiversity

Eco-Friendly Garden: Attracting Pollinators, Beneficial Insects, and Other Natural Predators

This publication is based on new research in habitat management for purposes of planting insect-attracting plant species in order to intentionally draw insects to garden areas and urban landscapes.

https://secure.caes.uga.edu/extension/publications/files/pdf/B%201456_2.PDF

Selecting Trees and Shrubs as Resources for Pollinators

Anyone—from individual home gardeners to commercial and agricultural property managers—can promote pollinator health by selecting and planting appropriate plants. This guide provides options for selecting flowering woody plants that are attractive to bees and butterflies and sometimes have additional wildlife benefits.

<https://extension.uga.edu/publications/detail.html?number=B1483&title=Selecting%20Trees%20and%20Shrubs%20as%20Resources%20for%20Pollinators>



Pollinator Friendly Plant List for the Southeast

This fact sheet provides great information on appropriate native perennials, shrubs, and trees and which pollinators and wildlife they support

<https://xerces.org/publications/plant-lists/pollinator-plants-southeast-region>

Thirty Perennials for Pollinators

Learn how to grow your own pollinator plants! Conservation Horticulturist, Heather Alley, shares her tried and true propagation methods for thirty top-performing pollinator plants.

https://botgarden.uga.edu/wp-content/uploads/2017/01/Binder1_Redacted.pdf

Native Plant Nursery List

The Georgia Native Plant Initiative makes it easy to find ethical sources of local native pollinator plants across the state.

<https://botgarden.uga.edu/wp-content/uploads/2016/11/Directory-of-Native-Plant-Nurseries.pdf>

Georgia Pollinator Plants of the Year

This new program at the State Botanical Garden annually recognizes four top performing landscape plants that support pollinators and grow beautifully in a garden. Plants will be recognized and promoted from the following categories: Spring Bloomer, Summer Bloomer, Fall Bloomer and Georgia Native. Nominate your favorite pollinator plant on the webpage listed below.

<https://botgarden.uga.edu/conservation-science/pollinator-plant-program/>

2021 Winning Plants of the Year



Spring Bloomer

Conradina
(*Conradina canescens*)



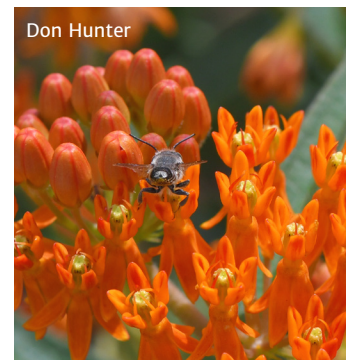
Summer Bloomer

Sweet Pepperbush
(*Clethra alnifolia*)



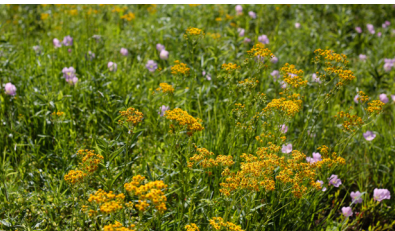
Fall Bloomer

Downy Goldenrod
(*Solidago petiolaris*)



Georgia Native

Butterfly Weed
(*Asclepias tuberosa*)



Tips and Tricks

My pollinator tip is plant for your site! If you know you have poor soils, dry soils, soils that don't drain well, intense sun, partial shade, etc... set yourself up for success, and plant a pollinator that like those conditions. We love these coreopsis grandiflora and coreopsis lanceolata because of how well adapted they are to our hot, dry site. They are happy and blooming, despite the unamended soil and intense July heat. - *Laura Ney, Athens-Clarke County Extension, Agriculture and Natural Resources Agent*



Coreopsis verticillata



Coreopsis grandiflora

In July, the garden is usually well established and in full bloom, and with the temperatures at their highest for the year, there isn't much you want or need to do in the heat. July becomes all about maintaining the garden. Water, weed and deadhead. Deadheading or cutting back the spent flowers is vital to keeping many of our blooming annuals and perennials re-blooming for weeks to come. Removing the unsightly spent blooms can both prevent the littering of discolored blooms on the ground and preserves the plants energy to produce more flowers. When you leave the dead or dying flowers on, the plant will use its energy to produce seed instead of new flowers. A few plants commonly found in home gardens that benefit from deadheading are dahlias, daylilies, geraniums, petunias, roses and zinnias. Another is Echinacea but leaving some of their flowers to go to seed on the Echinacea will help attract birds to your garden. -*Connie Cottingham, Events Coordinator, State Botanical Garden of Georgia*

Enjoy holes in the leaves of your plants. Look for caterpillars. Summer gardening is a bit about letting go! -*Jennifer Ceska, Conservation Coordinator, State Botanical Garden of Georgia*

Register your pollinator garden on the Georgia Pollinator Partnership's interactive map, AKA the GAPP map! This is a great way to showcase the great work you are doing to conserve pollinators in your garden. You can include any pollinator garden certifications you have recieved and upload photos too! Check it out at <https://gapp.org/register-your-garden-now/your-pollinator-garden-online/>

Lauren Muller, Conservation Outreach Coordinator, State Botanical Garden of Georgia



Don Hunter
Gulf Fritillary on Purple Passionvine



Videos

Connect to Protect

Learn all about Connect to Protect pollinator garden certification at the State Botanical Garden.

https://kaltura.uga.edu/media/t/1_bmvfurp8

Pollinators in Agriculture

Pollinators play a critical role in our agricultural system and food supply chain. Hear UGA Extension experts talk about how and why they are so important.

<https://youtu.be/RczHxJI57xU>

How to Identify Insects

Get ready for the Great Georgia Pollinator Census by learning all about how to count on the big day.

<https://youtu.be/MJkR8eVXgYo>

Pollinator Basics

You might be surprised to hear about all of the different types of pollinators you can find in your garden. Check out this video to learn more.

https://kaltura.uga.edu/media/t/1_3bo881zo

Choosing the Right Pollinator Plant

What makes a plant good for supporting pollinators? The State Botanical Garden shares some tips for picking the right plant.

https://kaltura.uga.edu/media/t/1_oq72o7h6

With Love,
the State Botanical Garden of Georgia and the
University of Georgia Extension



State Botanical Garden
of Georgia
UNIVERSITY OF GEORGIA



UNIVERSITY OF GEORGIA
EXTENSION