



# Jio Platforms Limited

Kelvinator Air Conditioner (AC)

Kelvinator - Connect to Comfort App

User Guide

Rev. No. 1.0

Rev. Date: 27-02-2023

## Copyright Information

**This Document published in electronic or hardcopy form is property of Jio Platforms Limited (JPL).** No part of this document may be copied, reproduced, stored in any retrieval system, or transmitted in any form or by any means, either electronically, mechanically, or otherwise without prior written permission. JPL shall at all times remain the sole owner of the copyright in the Technical Documents.

© Jio Platforms Limited, 2023

ALL RIGHTS RESERVED

### TRADEMARKS

All the brand names and other products or services mentioned in this Technical document are identified by the trademarks or service marks of JPL and wherever applicable, other third parties. You are not permitted to use or reproduce these marks except as part of the unaltered Technical Documents without the prior written consent of the JPL or where applicable the third party owner.

### DISCLAIMER

The Technical Documents are provided on an 'as is' basis without guarantees, representations, conditions or warranties as to their accuracy or completeness or that they are free from error. The information in this document is subject to change without notice and should not be construed as commitment by Jio Platforms Limited.

It is possible that use of the technical matter published in this Document may require the permission of the proprietor of one or more patents. You are entirely responsible for identifying and where necessary obtaining a licence under such patents should you choose to use any such technical matter. JPL has no responsibility in this regard and shall not be liable for any loss or damage suffered in relation to an infringement of any third party patent as a result of such use.

### Terms of Use

You are permitted to download, use and distribute copies of JPL Technical Documents made available in electronic or physical form, except that:

- a) You must only use and distribute the Technical Requirement Documents in their entirety without amendment, deletion or addition of any legal notice, text, graphics or other content; and
- b) You are not permitted to make any of the Technical Documents available for download on any publicly accessible bulletin board, website, ftp site or file sharing service.

## Table of Contents

<b>1</b>	<b>Preface .....</b>	<b>5</b>
1.1	Scope.....	5
1.2	Intended Audience.....	5
<b>2</b>	<b>Registering on Kelvinator Application .....</b>	<b>5</b>
<b>3</b>	<b>Dashboard View.....</b>	<b>6</b>
<b>4</b>	<b>Adding Kelvinator AC in the App.....</b>	<b>6</b>
4.1	Adding the Kelvinator AC for the First Time .....	7
4.2	Adding the Kelvinator AC from Dashboard .....	10
<b>5</b>	<b>Adding Rooms.....</b>	<b>15</b>
<b>6</b>	<b>Controlling the Kelvinator AC using Kelvinator App .....</b>	<b>17</b>
6.1	Adding Favorite Program .....	18
6.2	Adding Timer .....	20
6.3	AC Modes & Functions.....	21
6.4	Adding Scheduler .....	24
<b>7</b>	<b>Editing the device details.....</b>	<b>26</b>
<b>8</b>	<b>Deleting a device.....</b>	<b>27</b>
<b>9</b>	<b>Replacing the AC.....</b>	<b>28</b>
<b>10</b>	<b>Changing WiFi Settings.....</b>	<b>30</b>
<b>11</b>	<b>Viewing Device details .....</b>	<b>32</b>
<b>12</b>	<b>Geofence (Magic On).....</b>	<b>33</b>
<b>13</b>	<b>Scene Management .....</b>	<b>35</b>
13.1	Creating a New Scene.....	35
13.2	Editing the Scene .....	40
13.3	Deleting the Scene .....	41
13.4	Changing Scene Status .....	41
<b>14</b>	<b>Managing Roles .....</b>	<b>42</b>
14.1	Accessing Admin Mode.....	42
14.2	Resetting PIN for Admin Mode.....	43
14.3	Changing PIN .....	44
14.4	Adding Secondary Users.....	45

- 15 Managing Notifications ..... 45**
- 16 Adding Voice Assistant ..... 47**
  - 16.1 Adding Google Assistant..... 47
  - 16.2 Adding Amazon Alexa..... 48
- 17 Left Side Menu..... 50**

# 1 Preface

## 1.1 Scope

This document covers key features and functionality of the **Kelvinator - Connect to Comfort** Mobile Application (**Kelvinator App**) to control your **Kelvinator Smart Air Conditioner (Kelvinator AC)**. Kelvinator App can be downloaded from Google Play Store or Apple App Store.

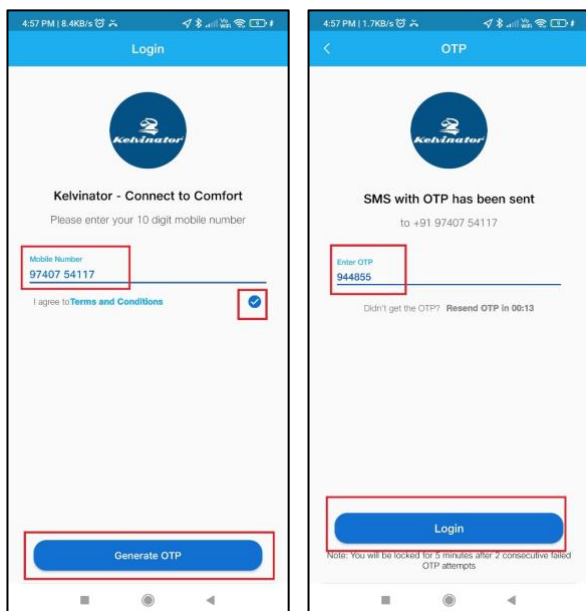
## 1.2 Intended Audience

This document is intended for all users of the **Kelvinator AC**.

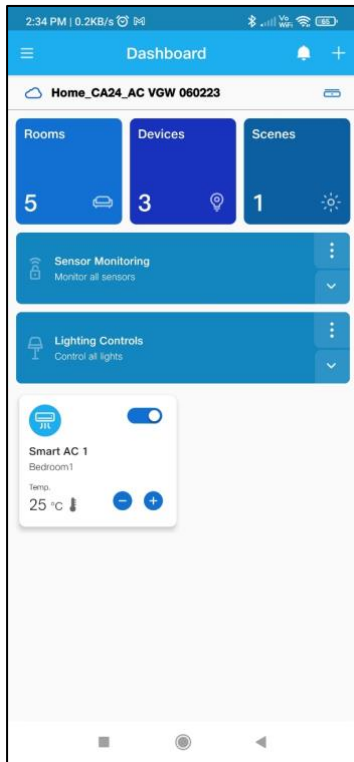
# 2 Registering on Kelvinator Application

To register on Kelvinator application, follow these steps:

- 1) Launch the Kelvinator app.
- 2) **Login** page displays. Enter **mobile number**, select the checkbox for **Terms and Conditions** and tap **OTP**.
- 3) You will receive OTP on the provided mobile number. Enter the OTP and tap **Login**.



### 3 Dashboard View



This Dashboard view displays the following:

- **Rooms, Devices** and **Scenes** added by you.
- Shortcut Tiles of Device / Room / Scene displays on Dashboard screen, if you have enabled the option **Quick access on Dashboard** from the **Edit** screen of respective room or device and **Preferences** screen of a scene. You can long press and move the Shortcut Tiles to adjust the position as per your requirement.
- **Maroon Dot** on bell icon depicts visual indication for new notification
- **Sensor Monitoring** helps to monitor all sensors in a room or entire house.
- **Lighting Control and Preset** helps you to control all the lights in a room or entire house.
- **Plus icon** on the top corner gives multiple options like **Add Home, Add Device, Add Room, Add Scene, Add Family Members** and **Add Voice Assistants**.

### 4 Adding Kelvinator AC in the App

**Important Note while adding the devices:**

- The home WiFi router has a limit on number of WiFi connections it can support. If the limit has reached, then this device or in turn any new WiFi device cannot be added or reconnected.
- Noisy environment: There may be a delay in controlling the device or update of status when there are multiple WiFi home routers in the vicinity with heavy ongoing data traffic.
- If the WiFi 2.4 GHz SSID / Password / Security Type of the home router is changed then the device will be disconnected from the network. To reconnect the device, follow the process

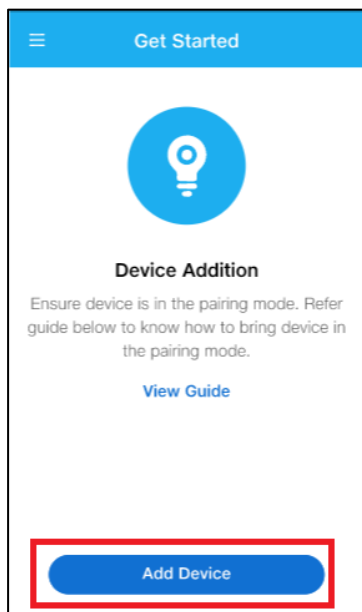
mention in the section [Changing WiFi Settings](#).

- Do not keep the device near WiFi radiating devices as it may cause interference.
- In case of Power outage, the device will retain its previous state when the power is restored.


## 4.1 Adding the Kelvinator AC for the First Time

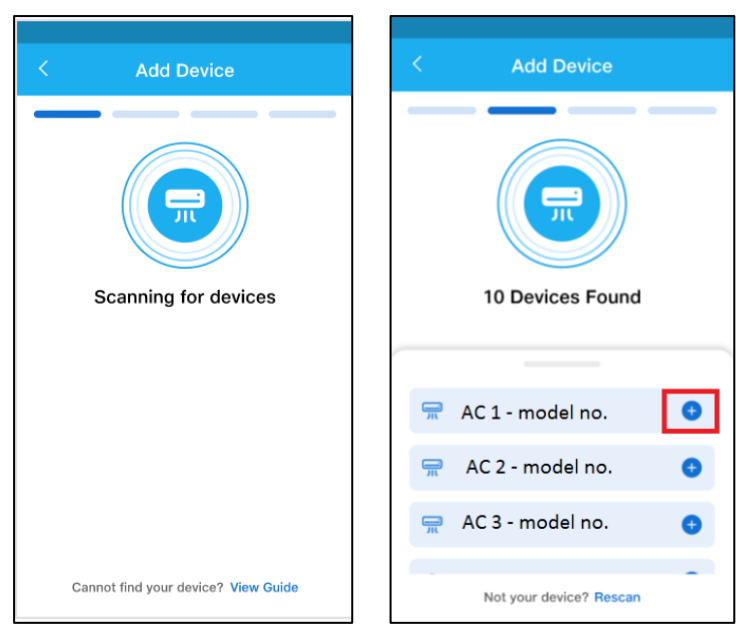
To add the AC in the App for the first time, follow these steps:

- 1) AC can be added to the Kelvinator App when it is in pairing mode. To enable pairing mode of the AC, follow these steps:
  - a) Power On the AC.
  - b) Press and hold the **iFollow/Wi-Fi** key for 3 seconds.
  - c) Remote LCD Display and IDU Display shows **CF** for 5 seconds indicating that AC is in pairing mode. Pairing mode will be active for 3 min.
- 2) Launch the Kelvinator app and login with the OTP. **Get Started** screen displays. Tap on **Add Device** button.

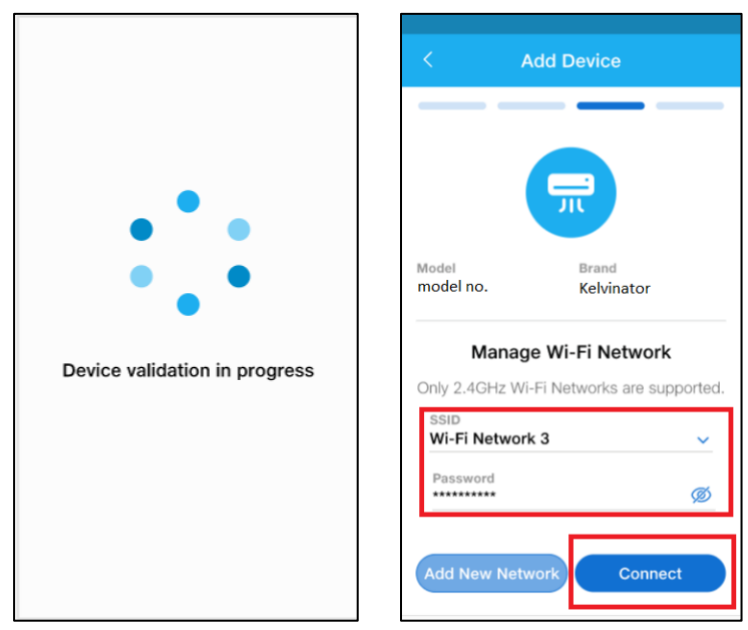


**Note:** You can tap on **View Guide** to check the pairing instructions of the device.

- 3) Application will request permission to access the Bluetooth. Tap on **YES**.
- 4) Once Bluetooth permission is granted, the application will scan all the Kelvinator Smart devices available within your phone's Bluetooth network range and displays on the screen. Select the required device by clicking **plus icon** .

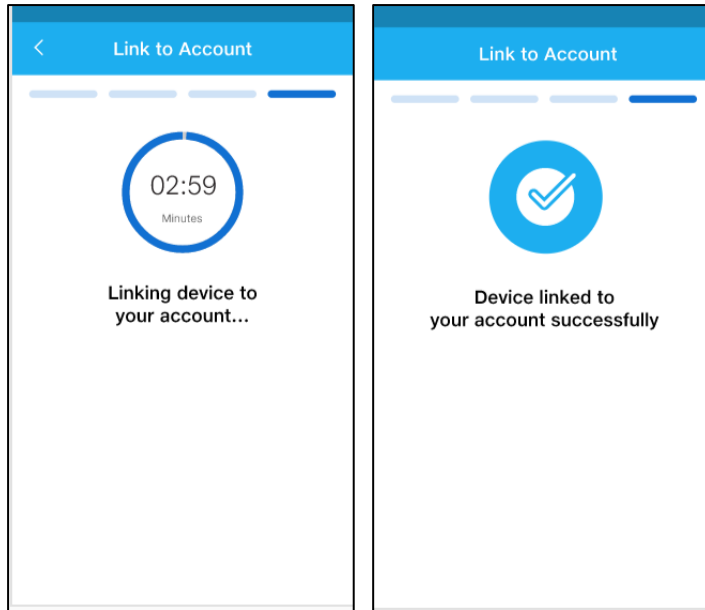


5) After device validation, screen displays with WiFi network details. Please enter the **Password** for the WiFi network and tap on **Connect**.

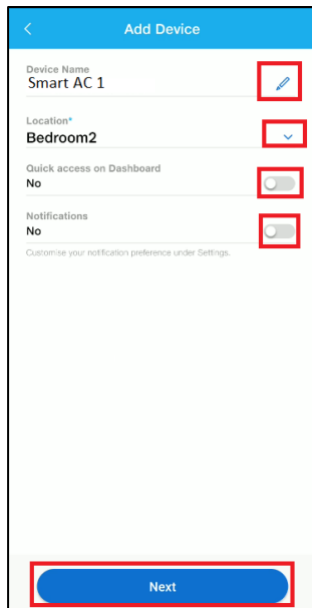


6) Once the WiFi connection is successful, the **Linking device to your account...** screen displays along with the 3 min timer. Success message displays when the device is successfully linked your account.

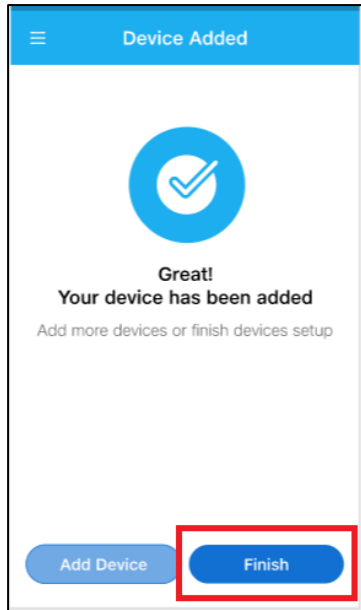




- 7) When the device is successfully connected to the network and successfully linked to your account, then **Device details** are displayed on the screen. Provide a unique name to the device (e.g. Bedroom AC, Hall AC, Family AC etc.), **select location** for the device, enable **quick access on dashboard** option and enable **Notification** option. Tap **Next** button.  
**Note:** It is mandatory to select a location for the device to proceed further.



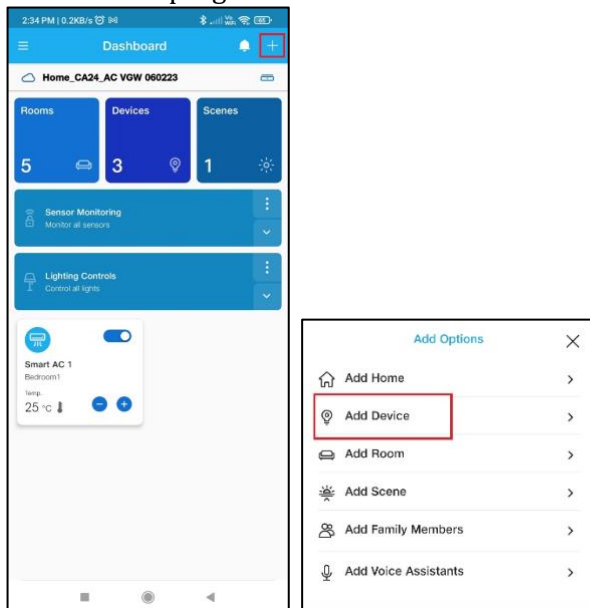
- 8) Screen displays success message that the device is added. Tap on **Finish** to complete the device addition process. To add more devices, you can tap on **Add Device**.



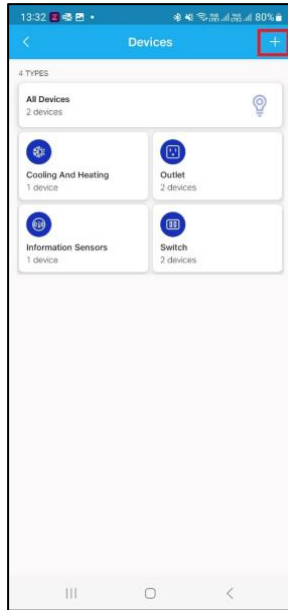
## 4.2 Adding the Kelvinator AC from Dashboard

To add the AC in the App from the **Dashboard** screen, follow these steps:

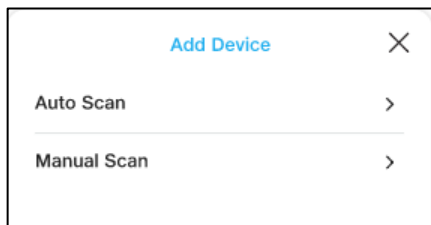
- 1) AC can be added to the Kelvinator App when it is in pairing mode. To enable pairing mode of the AC, follow these steps:
  - a) Power On the AC.
  - b) Press and hold the **iFollow/Wi-Fi** key for 3 seconds.
  - c) Remote LCD Display and IDU Display shows **CF** for 5 seconds indicating that AC is in pairing mode. Pairing mode will be active for 3 min.
- 2) Launch the Kelvinator app and login with the OTP. **Dashboard** screen displays. Tap the **plus** icon on the top right corner and select **Add Device** from the list of options.



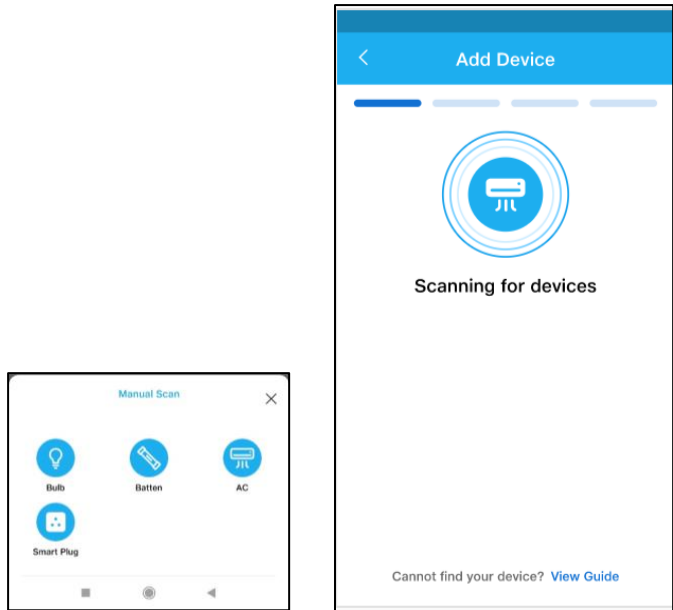
Alternatively, on the **Dashboard**, go to **Devices** and tap on **plus icon**  to add the new device.



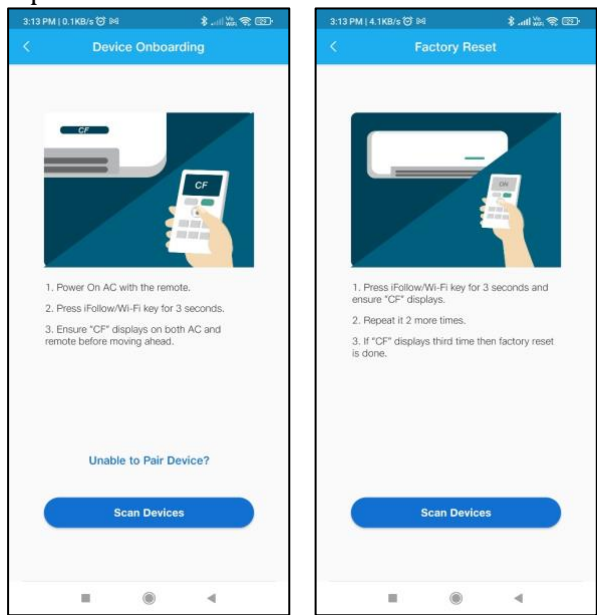
- 3) Screen displays two options – **Auto scan** and **Manual scan**. Select the option as per your requirement.
- Auto scan**: In the Auto scan, the App will search for all the devices available within Bluetooth network range.
  - Manual scan**: In the Manual scan, you need to select the device type which needs to be added. App will scan only that device type within the Bluetooth network range.




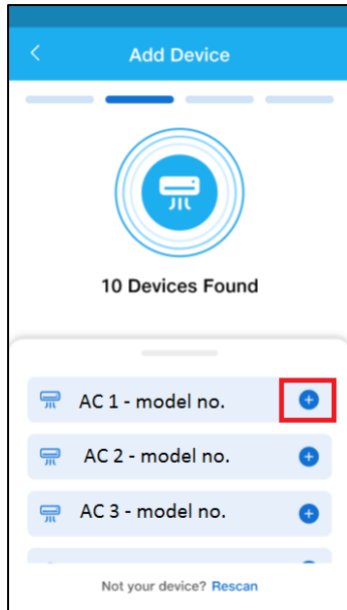
- 4) In case of Manual scan, select the device type, in this case **AC**. Ensure that the AC is in pairing mode.



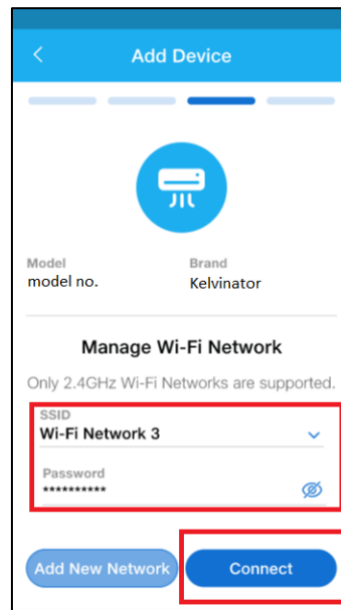
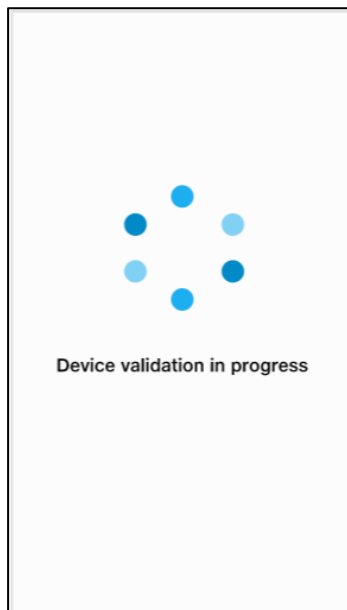
5) You can tap on **View Guide** to view the pairing instructions. Once device is in pairing mode, tap on **Scan Devices** button.



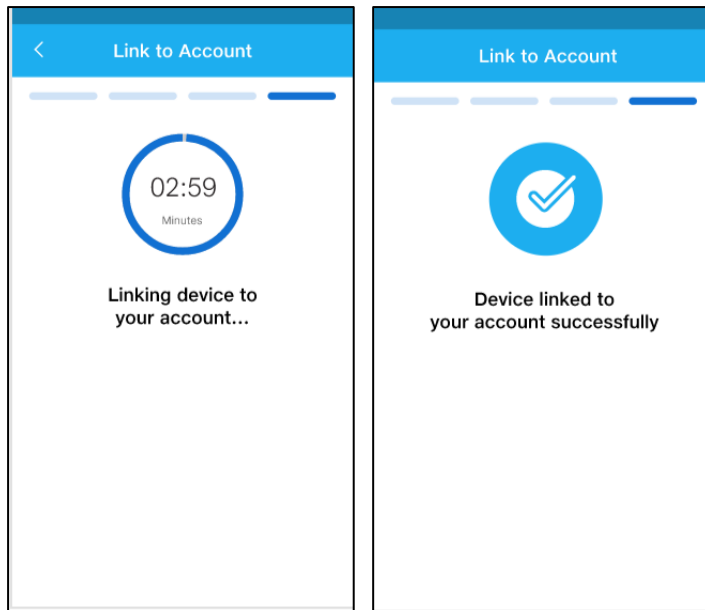
6) App will scan all the Smart ACs available within the Bluetooth range and displays on the screen. Select the required AC by clicking **plus icon** .



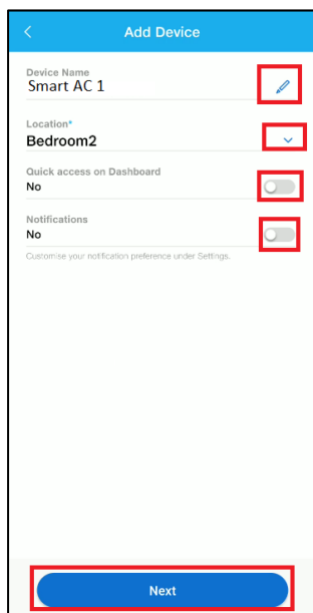
- 7) After device validation, screen displays with WiFi network details. Please enter the **Password** for the WiFi network and tap on **Connect**.



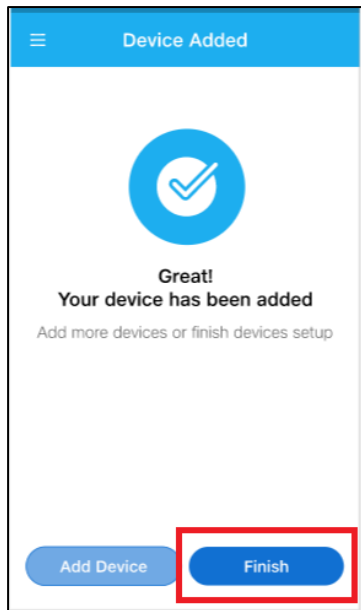
- 8) Once the WiFi connection is successful, the **Linking device to your account...** screen displays along with the 3 min timer. Success message displays when the device is successfully linked your account.



- 9) When the device is successfully connected to the network and successfully linked to your account, then **Device details** are displayed on the screen. Provide a unique name to the device (e.g. Bedroom AC, Hall AC, Family AC etc.), **select location** for the device, enable **quick access on dashboard** option and enable **Notification** option. Tap **Next** button.  
**Note:** It is mandatory to select a location for the device to proceed further.



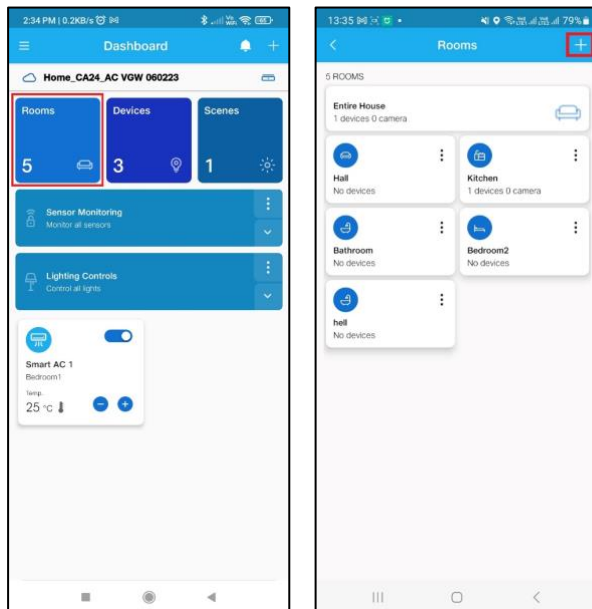
- 10) Screen displays success message that the device is added. Tap on **Finish** to complete the device addition process. To add more devices, you can tap on **Add Device**.



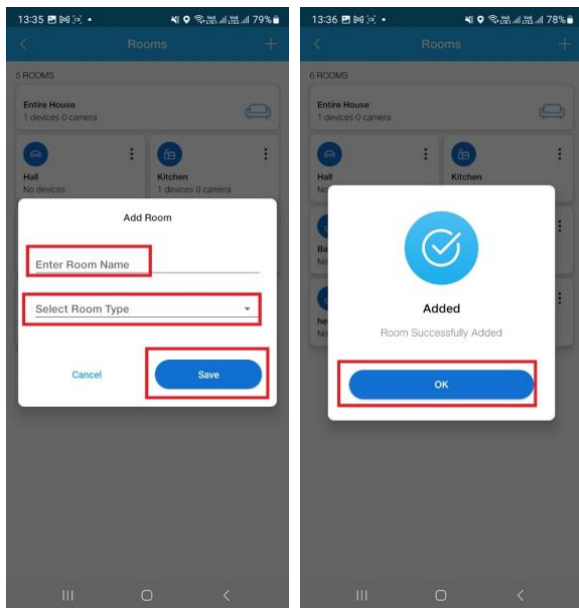
## 5 Adding Rooms

While adding the device for the first time, by default 2BHK house layout is created. To add or modify rooms, follow these steps:

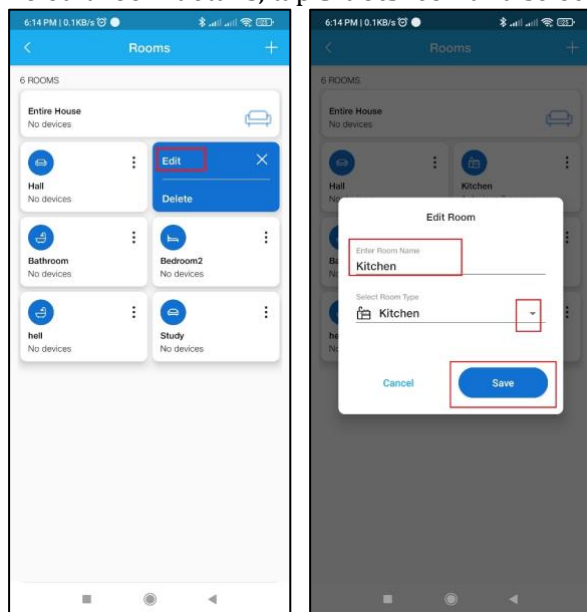
- 1) Select **Rooms** on the **Dashboard** screen to access the **Rooms** screen. Tap plus icon on the top right corner to add new room.



- 2) Enter **Room name** and select **Room type** from the dropdown list. Tap **Save** button. Success message displays when the room is added.

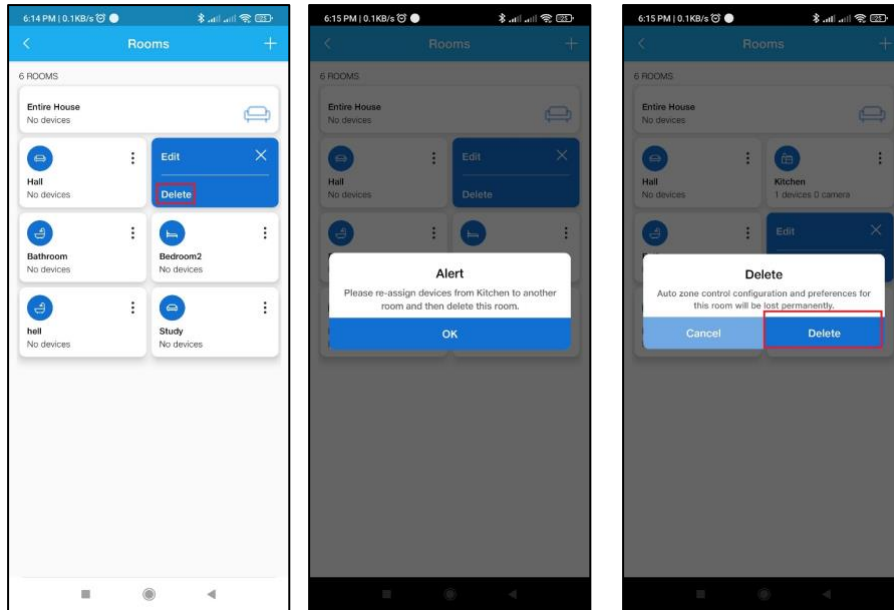


3) To edit room details, tap **3-dots icon** and select **Edit** option.



4) To delete the room, tap **3-dots icon** and select **Delete** option. You cannot delete the room if any devices are associated with it. First, you need to select another location/room for the devices and then you can delete the room when there are no devices associated with that room.

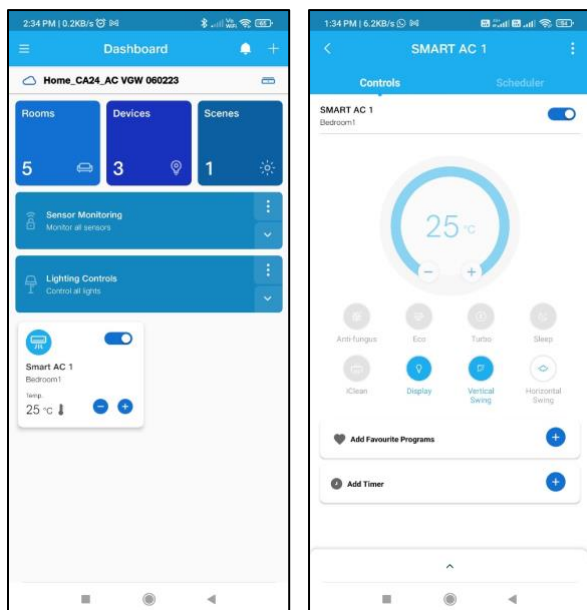




## 6 Controlling the Kelvinator AC using Kelvinator App

On the Kelvinator app, tap the shortcut tile of device to view the device details. On the device details screen, you can do the following:

- **Power On / Off** the AC using the toggle switch available.
- Change the **Temperature** of the AC using the slider bar.
- Swipe from bottom of the screen to view and set AC modes – **Auto, Cool, Dry** and **Fan**. Refer the section [AC Modes & Functions](#) for more details.
- Enable display panel of the AC by tapping on the **Display** button.
- Enable the Swing feature by tapping on the **horizontal** or **vertical Swing** button.
- Add **Favorite Program** with predefined configurations. Check [Adding Favorite Program](#) section for more details.
- Add **Timer** to automatically switch Off/On the AC as per configured time. If AC is in Off state, On timer can be set and vice versa. Check [Adding Timer](#) section for more details.



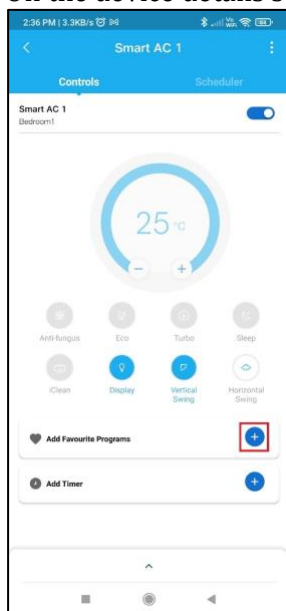
## 6.1 Adding Favorite Program

Using Favorite Program feature, you can add a set of predefined configurations and then enable it whenever required with just one click. You can add up to 3 Favorite Programs in the app.

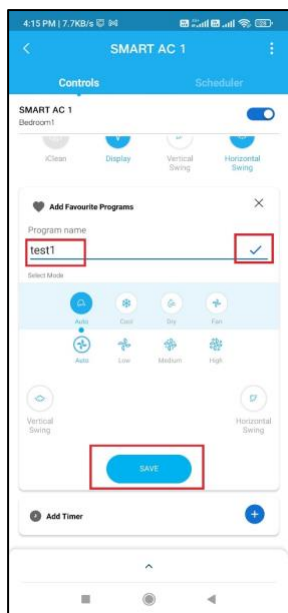
To add a new Favorite Program, follow these steps:

**Note:** Favorite program is not accessible with AC in Off state.

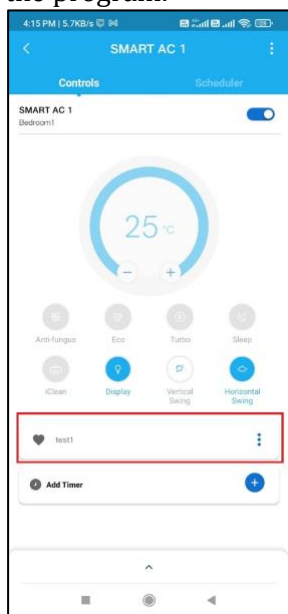
- 1) On the device details screen, tap on **plus** button to add a new Favorite Program.



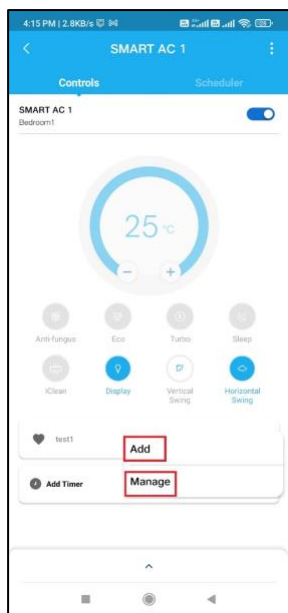
- 2) On the **Add Favorite Programs** screen, you can provide the **Program name**, select **Mode**, and enable **horizontal Swing / vertical swing** option as per your requirement. Tap **Save** button to create the new Favorite Program.



3) Newly created Program displays on the device details screen. You can tap on it to activate the program.



4) Tap on **3 dots icon** to view the list of options for the added Program. Tap on **Add** option to add a new Favorite Program. You can add up to 3 Programs. Tap **Manage** to **Edit** or **Delete** the existing Program.



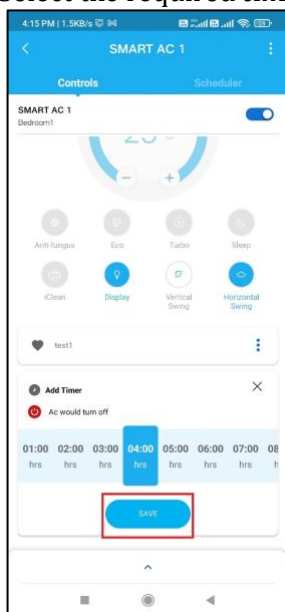
## 6.2 Adding Timer

You can add the Timer to automatically turn Off/On the AC as per the preconfigured time. If the AC is in On state, Off timer can be added and vice versa. To add the Timer, please follow these steps:

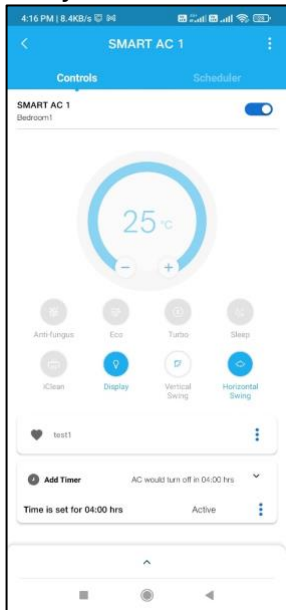
**Note:**

- Only one Timer can be added at a time.
- Timer gets cleared if an AC On/Off operation is performed.
- Timer can be edited via physical remote also.

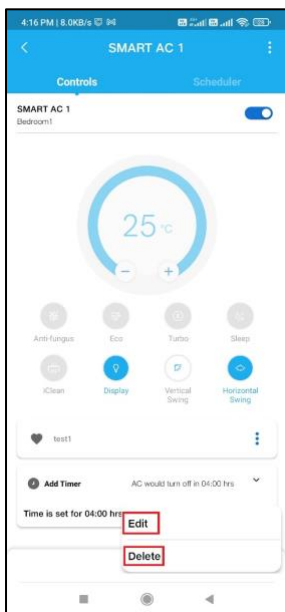
- 1) On the device details screen, tap on **plus** button to add the Timer.
- 2) Select the required **time duration** and tap **Save** button.



3) Newly added Timer displays on the device details screen. Tap on it to view the Timer details.

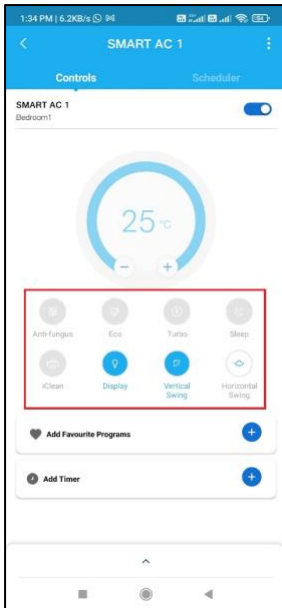


4) Tap on **3 dots icon** to view the list of options for the Timer. Tap on **Edit** option to change the time duration or tap **Delete** to delete the Timer.



### 6.3 AC Modes & Functions

There are some AC functions available on the device screen. You can activate it by just tapping on the respective icon.



### Eco:

- Eco function is used to reduce power consumption.
- After activating Eco function, set temperature will automatically increase to 27°C and compressor frequency will gradually reduce to save electricity.
- In Eco function, cooling capacity is compromised to save electricity, hence customers are advised to use Eco mode as per their comfort & convenience.

### Anti-fungus:

- The Anti-fungus function dries the evaporator coil.
- The indoor blower works for some time after the AC is switched off to dry the indoor unit.

### iClean:

- This functionality is available in **Cool mode** only.
- Using this function, system goes in cleaning mode for 35 minutes.
- With single press of **iClean** button, all other buttons, except **ON/OFF, Mode** and **iClean** are inactive. On pressing **ON/OFF, Mode** or **iClean** button, **iClean** will be cancelled and AC will run on previous settings.

### Sleep:

- SLEEP function automatically adjusts the room temperature to make it more comfortable.
- The set temperature will be raised by 1°C in 60 min and by 1°C in another 60 min.

### Turbo:

- Turbo function increases cooling instantly for user comfort.
- After activating, set temperature will be reduced to 16°C and fan speed to highest.

**Vertical Swing:**

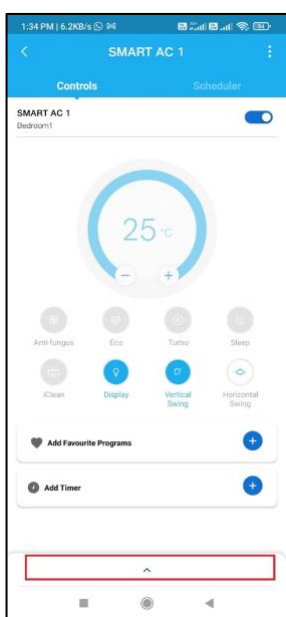
- AC Fan blows air vertically in the room

**Horizontal Swing:**

- AC Fan blows air horizontally in the room

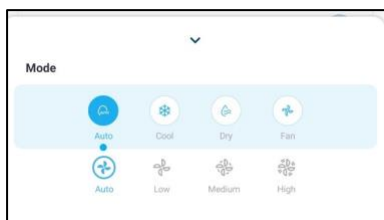
**Modes:**

To access AC Modes, swipe from bottom of the screen. There are 4 AC modes – **Auto**, **Cool**, **Dry** and **Fan**.



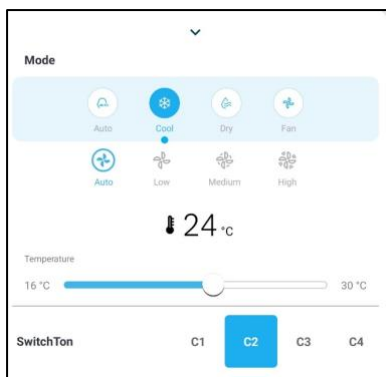
**Auto Mode:**

In the Auto Mode, cooling capacity and Fan speed will automatically vary as per the set temperature.



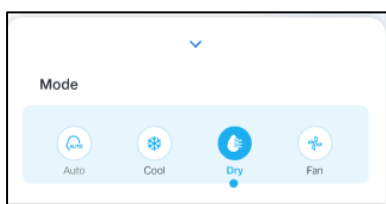
**Cool Mode:**

In the Cool Mode, you can adjust the temperature from 16°C to 30°C.



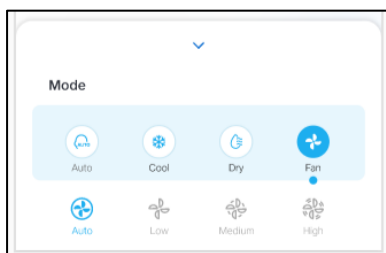
**Dry Mode:**

In dry mode, AC acts as a dehumidifier by removing moisture from the indoor air.



**Fan Mode:**

With the Fan Mode, you can adjust the Fan speed as **Auto, Low, Medium** or **High**.



## 6.4 Adding Scheduler

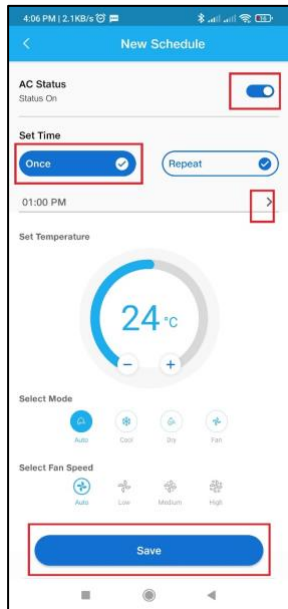
You can set up a Scheduler to operate the AC at specific time of the day with customizable settings. To add the Scheduler, follow these steps:

- 1) Under the **Scheduler** tab, tap the **Add Scheduler** button.

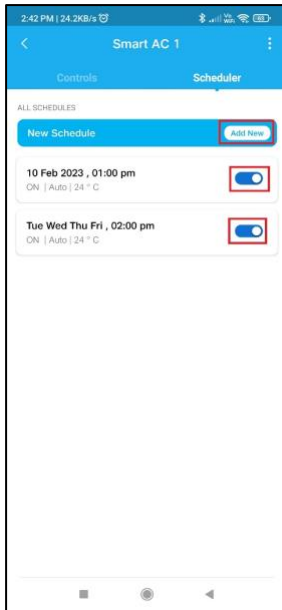




- 2) On the **New Schedule** screen, you can set the following and tap **Save** button.
  - a) AC status: **On / Off**
  - b) Set Time frequency: **Once** or **Repeat**. In case of **Repeat** frequency, please select the days on which you want to setup the Scheduler.
  - c) Set Time: select the exact time when you want to turn On/Off




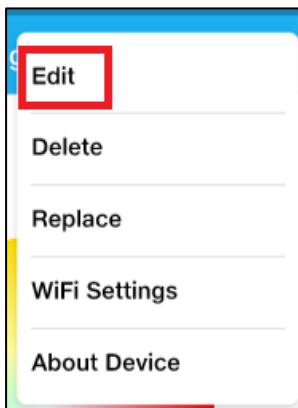
- 3) All the configured Schedulers are available under the **Scheduler** tab. You can **enable/disable** the specific Scheduler using the toggle switch or tap on the Scheduler to make any changes. You can tap **Add New** to add a new Scheduler.



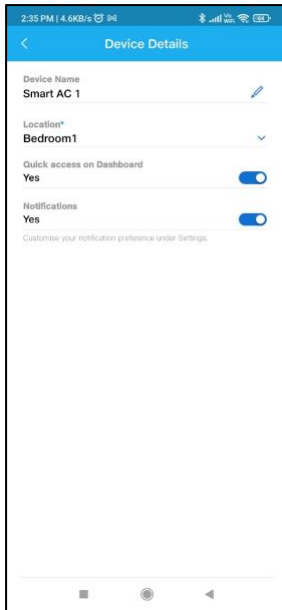
## 7 Editing the device details

To update the device details, follow these steps:

- 1) Tap and open the device for which you want to update the details.
- 2) Tap the **3 dots icon**  and select the **Edit** option.




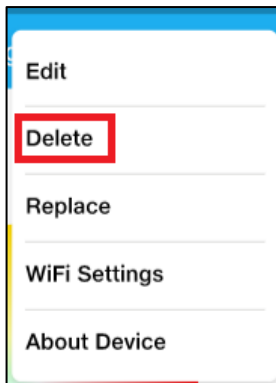
- 3) You can edit the **Device Name**, **Select Location**, enable/disable the **Quick access on Dashboard** and enable/disable **Notifications**.



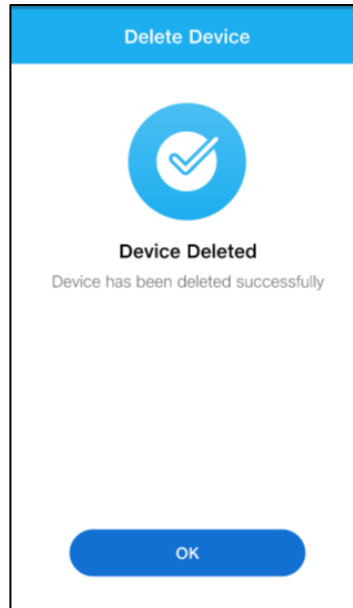
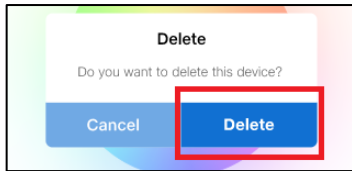
## 8 Deleting a device

To remove a device from the App, follow these steps:

- 1) Open the device, which you want to delete.
- 2) Tap the **3 dots icon**  and select the **Delete** option.




- 3) Confirmation screen displays. Tap **Delete** to confirm the device deletion. Success message displays on the screen when the device is deleted.

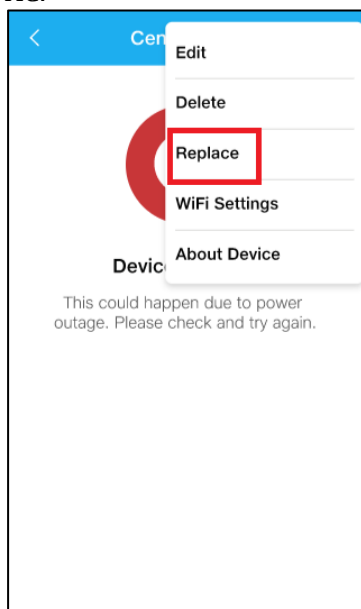



## 9 Replacing the AC

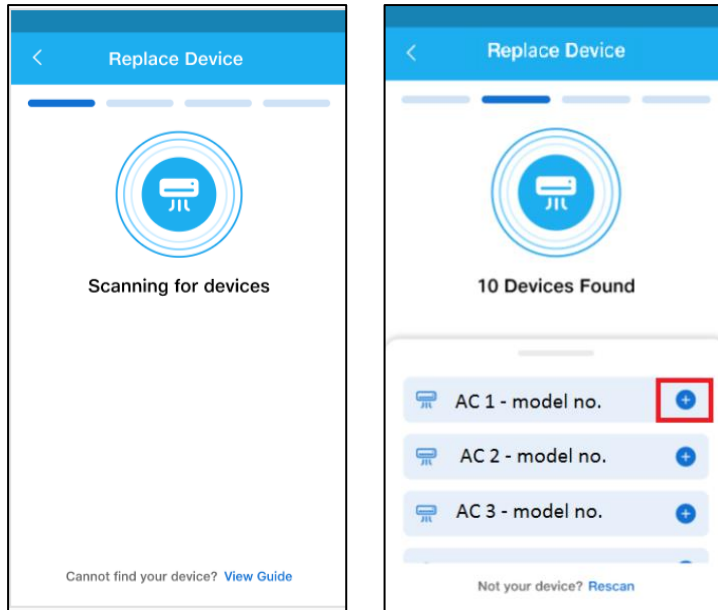
Using this option, you can replace a faulty device. The device should be offline in order to replace it.

To replace a device, follow these steps:

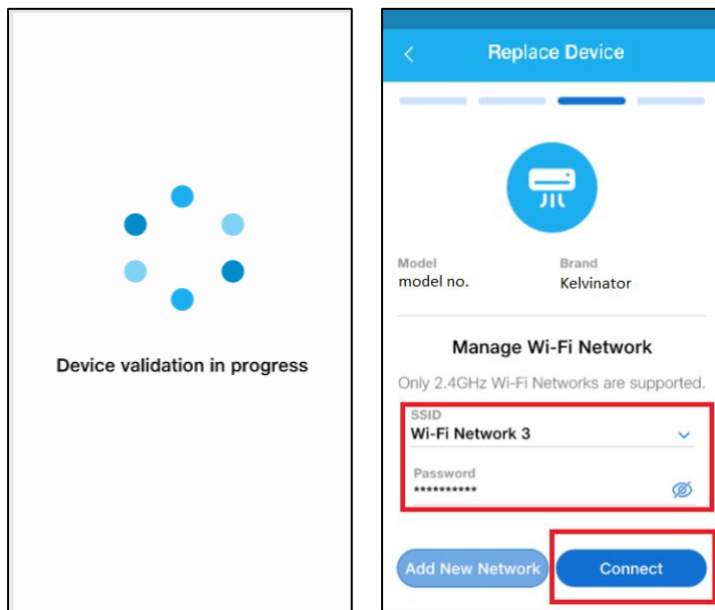
- 1) Select the offline device which you want to replace.
- 2) Tap the **3 dots icon**  and select the **Replace** option. Enable the pairing mode of the new AC.



- 3) App will scan all the Smart ACs available within the Bluetooth range and displays on the screen. Select the required AC by clicking **plus icon** .

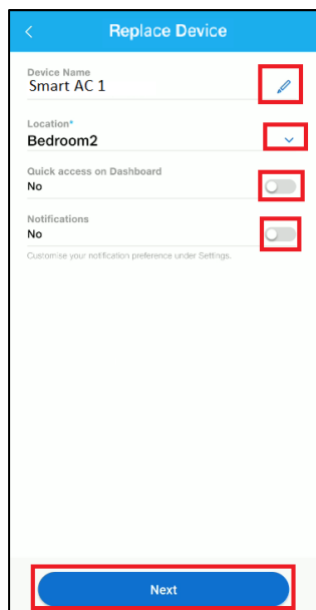


- 4) After device validation, screen displays with WiFi network details. Please enter the **Password** for the WiFi network and tap on **Connect**.

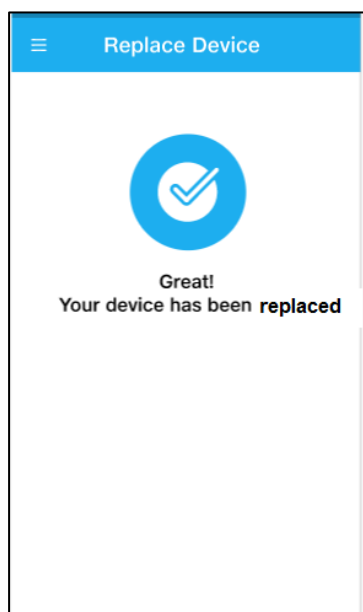


- 5) **Device details** screen displays. Provide a unique name to the device (e.g. Bedroom AC, Hall AC, Family AC etc.), select a location for the device, enable **quick access on dashboard** option and enable **Notification** option. Tap **Next** button.

**Note:** It is mandatory to select a location for the device to proceed further.




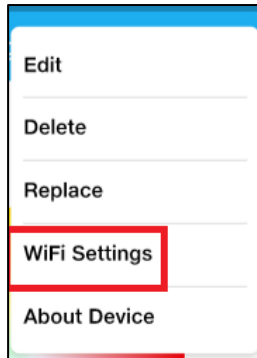
6) Screen displays success message that the device is replaced.



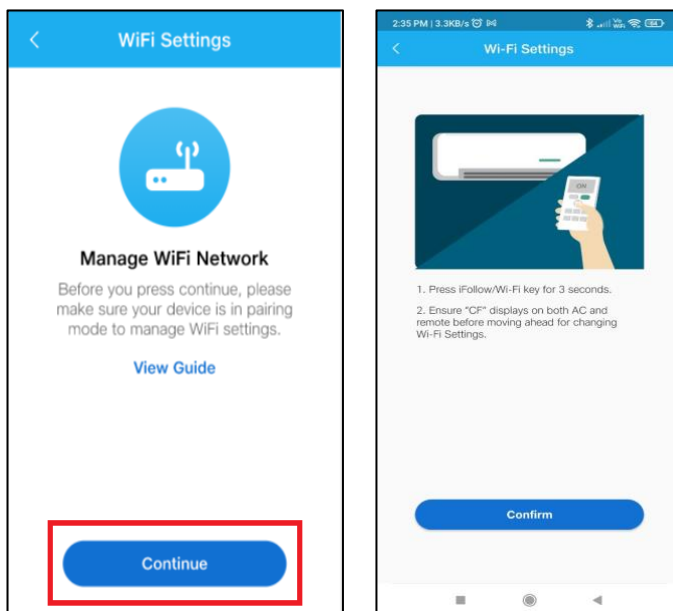
## 10 Changing WiFi Settings

Your device will disconnect from the network if you change your WiFi network settings. To connect the device to the new network or to change the WiFi Settings of the device, follow these steps:

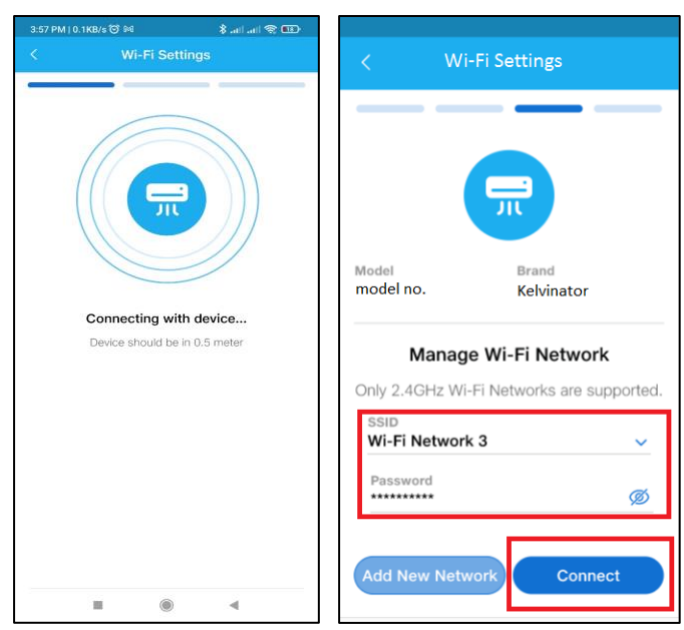
- 1) Open the device for which you want to change the WiFi settings.
- 2) Tap the **3 dots icon**  and select the **WiFi Settings** option.





- 3) Enable the **Network change mode** of the device. You can tap **View Guide** to view the instructions.
- Press and hold the **iFollow/Wi-Fi** key for 3 seconds.
  - Remote LCD Display and IDU Display shows **CF** for 5 seconds indicating that AC is in network change mode. Network change mode will be active for 3 min.

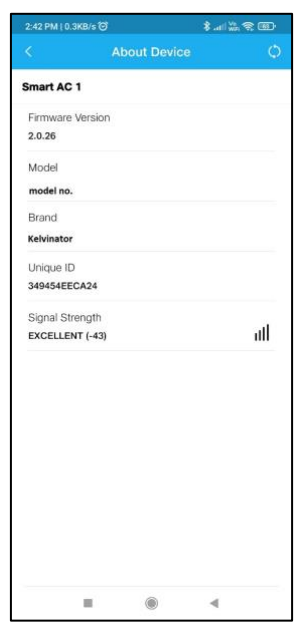
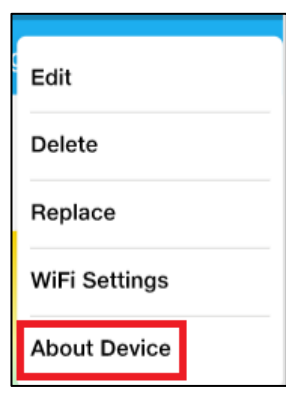


- 4) Select the new **SSID** or WiFi network from the dropdown and enter the network **Password**. Tap on **Connect** to connect the device to this new network. Success message displays once the device is successfully connected to the selected network.



## 11 Viewing Device details

To view the device details, select the device, tap the **3 dots icon**  and select the **About Device** option. Device details display on the screen. You can view details like **Firmware version** and **Model** of device. Tap on the  icon on the top right corner of the screen to check and update the device Firmware.



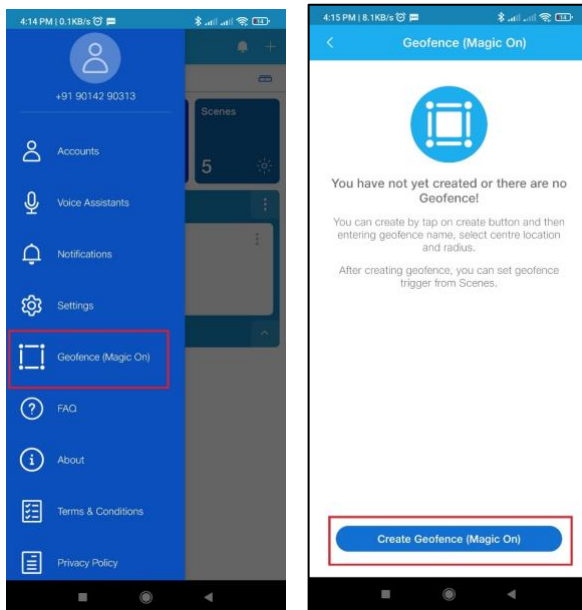


## 12 Geofence (Magic On)

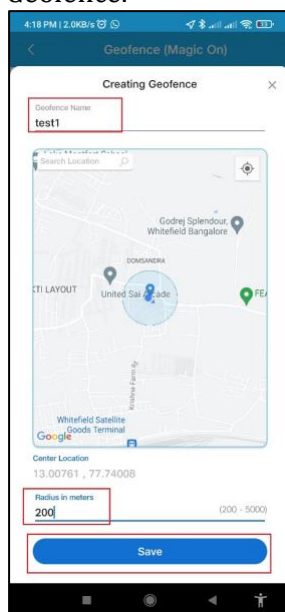
Geofence (Magic On) feature can be used to trigger the Scene. For example, Scene will be triggered when you are within 200 m radius of your Kelvinator AC.

To create a new Geofence and manage the existing Geofence, follow these steps:

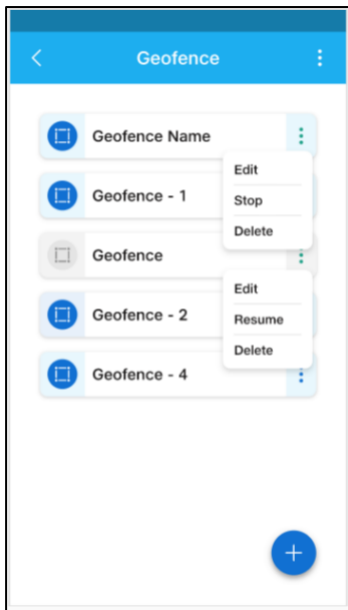
- 1) Go to **Side Menu > Geofence** and tap **Create Geofence**.



- 2) A pop-up displays to allow for Accessibility Service permission. Please tap **Yes** and enable the Accessibility service permission for the Kelvinator App.
- 3) Enter Geofence Name, select Location on the Map i.e. location of your house where Kelvinator AC is installed, enter the radius distance in metres. Tap **Save** to create the Geofence.

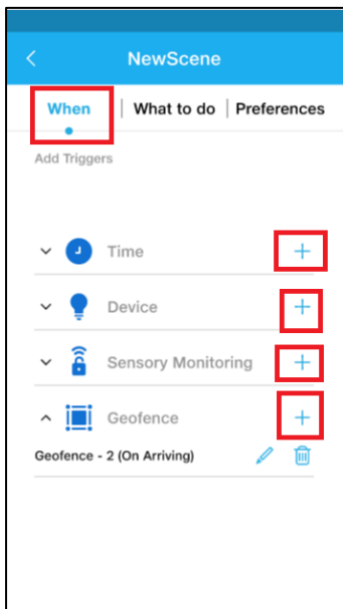


- 4) Created Geofence displays on the screen. You can **Edit**, **Stop/Resume** or **Delete** the existing Geofence.

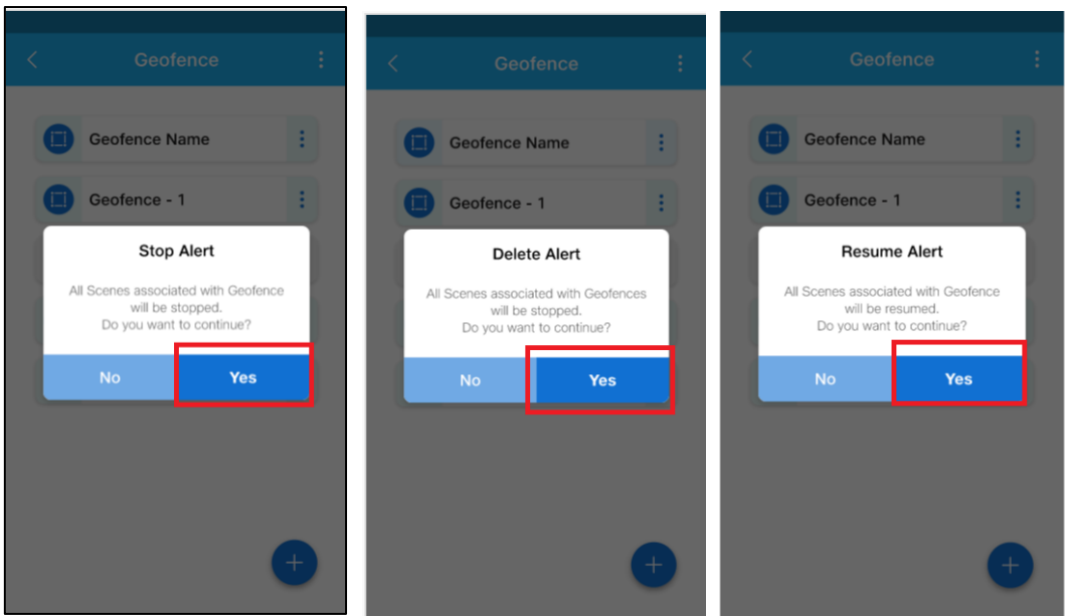


**Note:**

- Created Geofence can be used as a Scene trigger from the **When** tab while creating the Scene.



- When you **Delete**, **Stop** or **Resume** the Geofence, respective Scenes will be impacted.



## 13 Scene Management

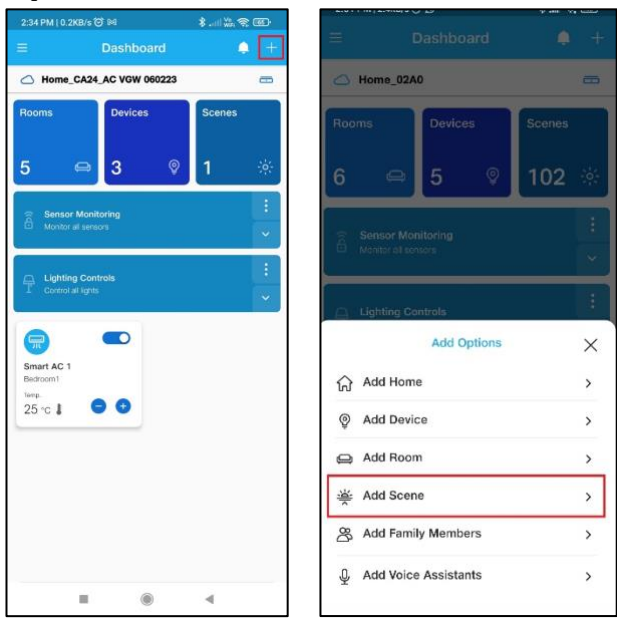
A Scene is a group of Actions sent to one or more devices at the same time. The devices in a Scene can belong to different device types. Scenes can be created for scheduling regular operations like switching on a device every day at a particular time or it can be created when some events are triggered.


Scenes menu can be launched from main dashboard by tapping on **Scenes** option.

### 13.1 Creating a New Scene

To create a new scene, follow these steps:

- 1) On the **Dashboard**, tap **plus** icon on the top right corner and select **Add Scene** from the list of options.

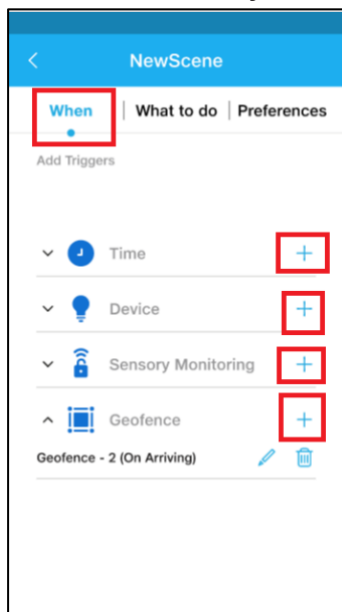



Alternatively, on the **Dashboard**, go to **Scenes** and tap the **Add icon**  to create a new scene.

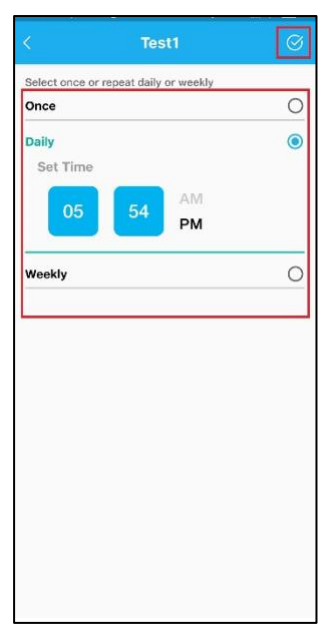
- 2) Enter the name of the Scene in the field and tap tick mark icon.



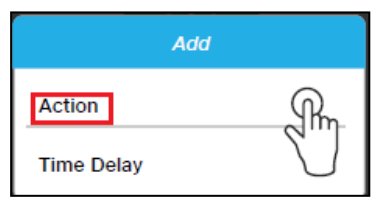
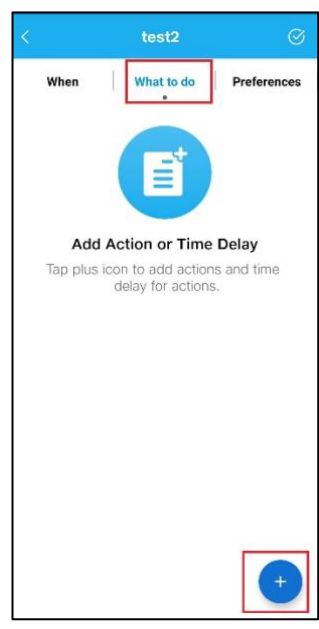
- 3) To add Triggers in the scene, tap on the **When** option. You can add 4 types of triggers- **Time**, **Devices** and **Sensory Monitoring** and **Geofence**. Use plus icon to add the required trigger.



- 4) To add **Time Trigger**, you can select frequency as **Once**, **Daily** or **Weekly**. Select the required frequency and time to add the Time trigger. You can use  button to select logical operators **AND** / **OR** to combine multiple triggers.



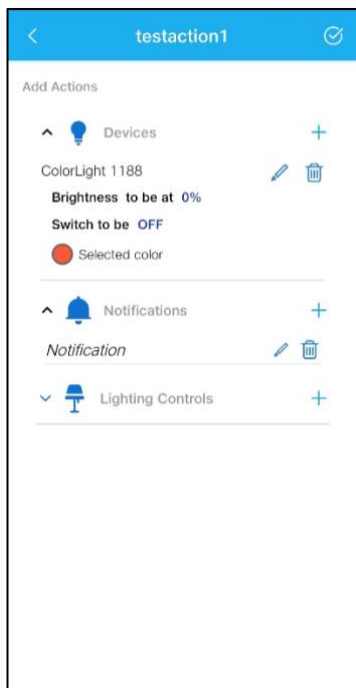
- 5) You can add Device Trigger for specific device functions. For example, Scene triggers when the **Kelvinator AC turns ON**. Select the device and its function to add the Device Trigger.
- 6) After defining Triggers, next step is to define action or actions sets for defined triggers. You can define various Actions sets, which will be executed when the trigger conditions are fulfilled. You can add multiple devices and status to action set. Tap **What to do** and tap plus icon to create new action. Select **Action** option.



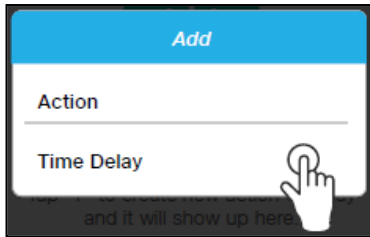
- 7) Enter action name in the field and tap tick mark button to save the changes.



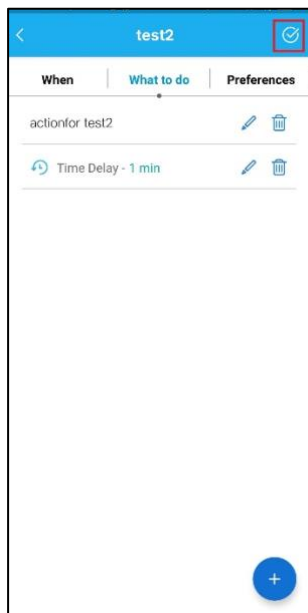
8) You can set actions for **Device**, **Notifications** and **Lighting Controls**.



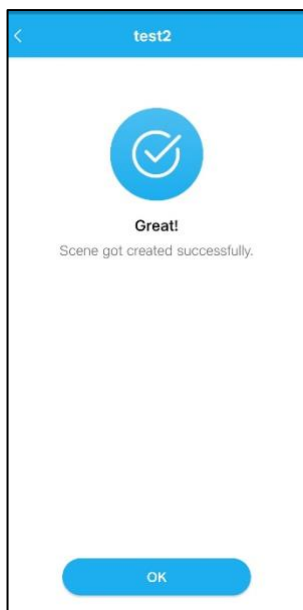
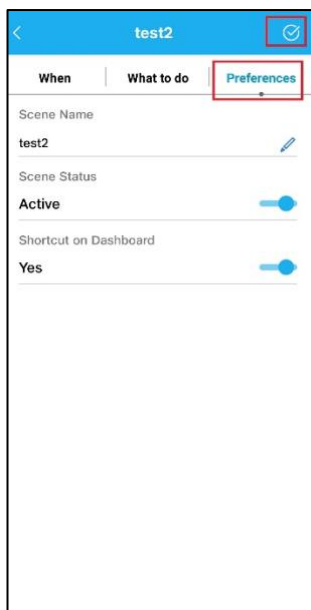
9) You can set time delay between two actions. Go to **What to do > Time delay**. Select the required time delay between two actions.




10) Configured Actions and Time delay displays on the screen.




11) Select **Preferences** to change details like Scene name, Active status and the quick access on dashboard option. Tap tick mark on the right corner of the screen to save the changes. Scene creation success message displays on the screen.

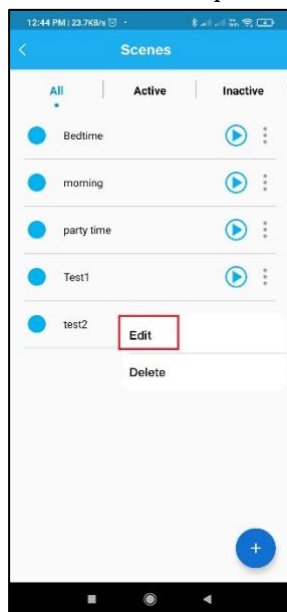


12) Once Scene is created, it displays on the **Scenes** screen. You can tap the  **icon** to test the scene.

### 13.2 Editing the Scene

To edit the scene, follow these steps:

1) On the Scenes screen, tap on the 3 dots  icon for the required scene which you wish to edit and select **Edit** option.




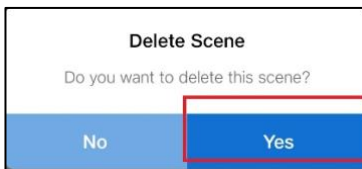
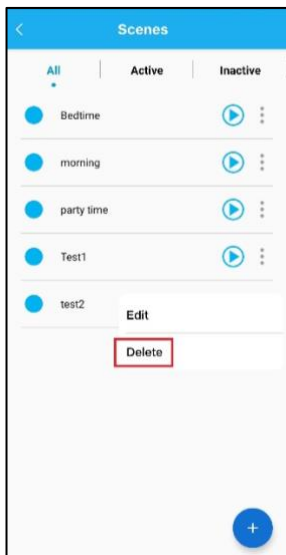
2) Make changes to the selected scene as per requirement.



### 13.3 Deleting the Scene

To delete the scene, follow these steps:



- 1) On the Scenes screen, tap on the 3 dots  icon for the required scene which you wish to delete and select **Delete** option.
- 2) Tap on **Yes** to delete the Scene. Success message displays on the screen.

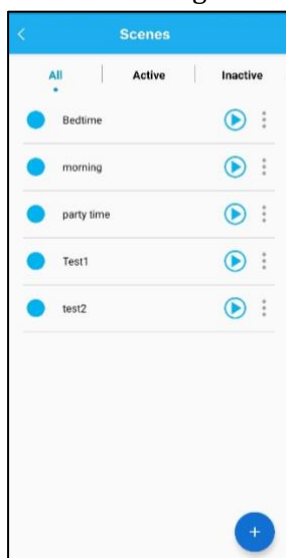


### 13.4 Changing Scene Status

To change the scene status Active / Inactive, follow these steps:

**Note:** If the scene is inactive then the scene will not get executed.

- 1) On the Scenes screen, choose the scene for which you want change the status. Tap the  **icon** to change status from ACTIVE to INACTIVE. The  icon appears beside the scene name indicating the scene is INACTIVE.



## 14 Managing Roles

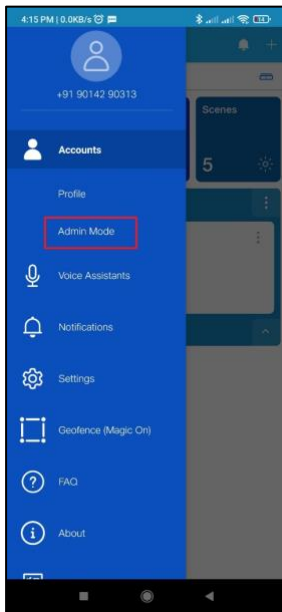
Following user roles are available in the application:

- 1) **Primary User:**  
**Permissions:** Add/Delete new user, Add devices/delete/modify device, Operate Modes, create scenes, edit scenes. User has option to set the admin PIN. Set and Receive Notifications. Admin mode need to be enabled to manage, create and edit scenes.
- 2) **Secondary User:**  
**Permissions:** Operate Modes, Scenes, Set and Receive Notifications. Secondary user can enter Admin mode by entering PIN and perform all actions, which Primary user can perform.

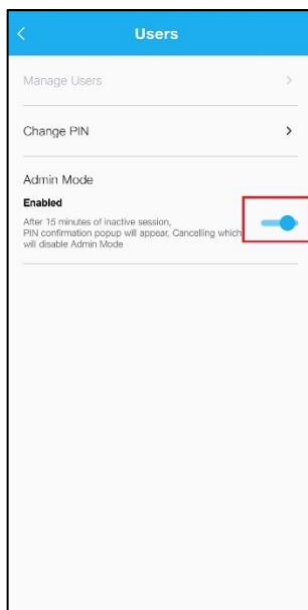
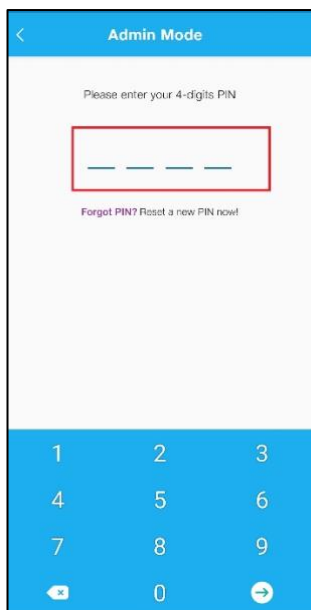
### 14.1 Accessing Admin Mode

To access Admin Mode, follow these steps:


- 1) On the **Dashboard** screen, go to  **Side Menu icon > Accounts** and select **Admin mode**.



- 2) Enter 4-digit PIN. By default, it is **0000** when accessing the Admin mode for the first time. The app will prompt the end user to change the admin PIN from 0000 to something else. This step cannot be skipped and user cannot set the admin PIN back to 0000.
- 3) After entering the PIN, screen displays options to **Manage Accounts**, **Change PIN** and toggle switch to enable Admin Mode. Use the toggle switch to enable the Admin Mode. Application prompts for PIN after 15 minutes of inactive session. You should enter correct PIN to continue using the Admin Mode.

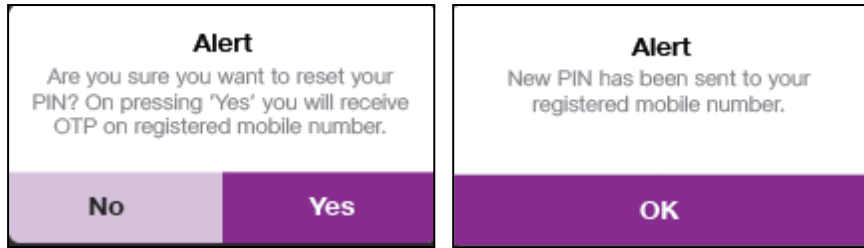


## 14.2 Resetting PIN for Admin Mode


- 1) If you forgot your PIN for Admin Mode, you can reset it by tapping on **Forgot PIN** text link under menu  **Side Menu icon > Accounts > Admin mode.**

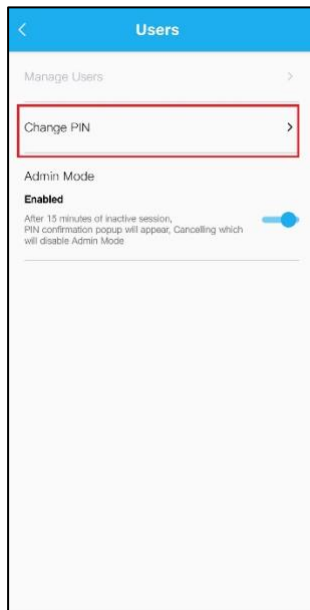



- 2) Tap **Yes** to confirm PIN reset. PIN or OTP will be sent on Smart Cable owner’s registered mobile number. Use that PIN to access the admin mode and then change the PIN. An SMS with link to reset the PIN shall be sent to the registered mobile. Using the link reset the admin PIN.

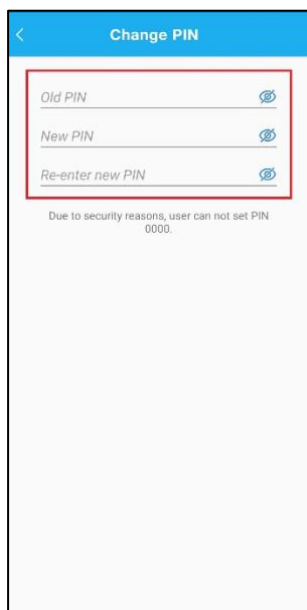


### 14.3 Changing PIN

- 1) To change the PIN, go to  **Side Menu icon > Accounts > Admin mode** and select **Change PIN**.






- 2) Enter Old PIN and new 4-digit PIN. Tap on  icon to save the changes. **PIN changed successfully** message displays on the screen.



## 14.4 Adding Secondary Users

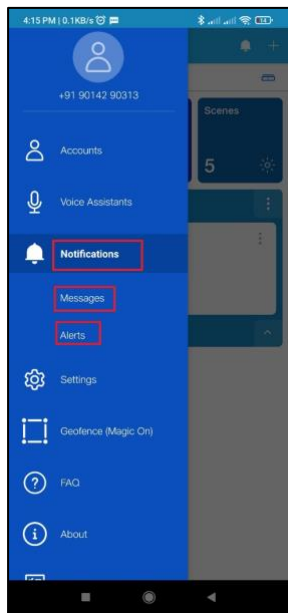
To add a secondary user to the account, follow these steps:

- 1) Go to  **Side Menu icon** > **Accounts** > **Admin mode** and select **Manage Accounts**. Users list displays.
- 2) Tap the **Add icon**  to add the new user.
- 3) Enter the name and phone number of the secondary user and tap **OTP button**.  
**Note:** Secondary user should have entered to system i.e. logged in the application at least once else on adding error message will be displayed.
- 4) An OTP is sent to the registered phone number (SMS) of the user for verification. Enter the OTP in the **Enter OTP** field and tap **Verify User**. Success message displays, tap **OK**.


**Note:** The Admin user can also delete the secondary user. Tap the **Bin icon**  in front of the user name. A confirmation screen displays. Tap **OK** to delete the user.

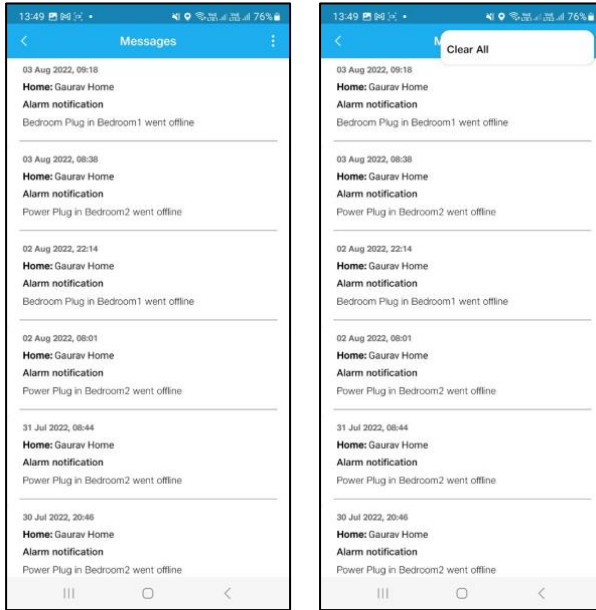
## 15 Managing Notifications



Notifications are available under side menu –

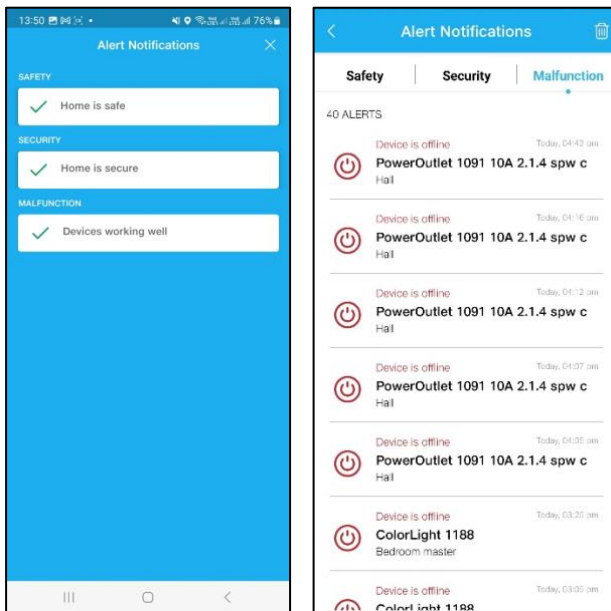


There are two types of notifications:

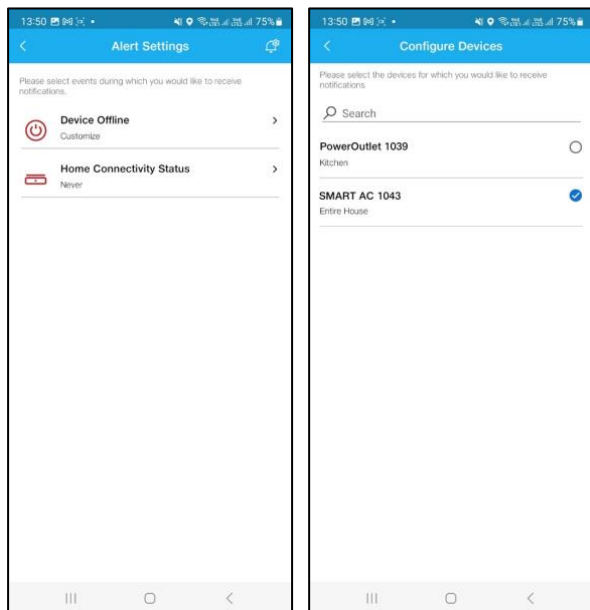
- 1) **Messages** – These are push notifications received in the form of popups. You can delete all messages by tapping on **3-dots menu**  and selecting **Clear All** option.



- 2) **Alerts** – These are important notifications where your attention is required. You can access Alerts from  **Side Menu** > **Notifications** > **Alerts** and also by tapping the bell icon .
- 3) Alerts are categorized into **Safety**, **Security** and **Malfunction**. Select respective tabs to view the Alerts.



- 4) To configure devices for the Alerts, go to **Side menu** > **Settings** and **Alert Settings** icon on the top right corner. Select the devices for which you want to receive the alerts.



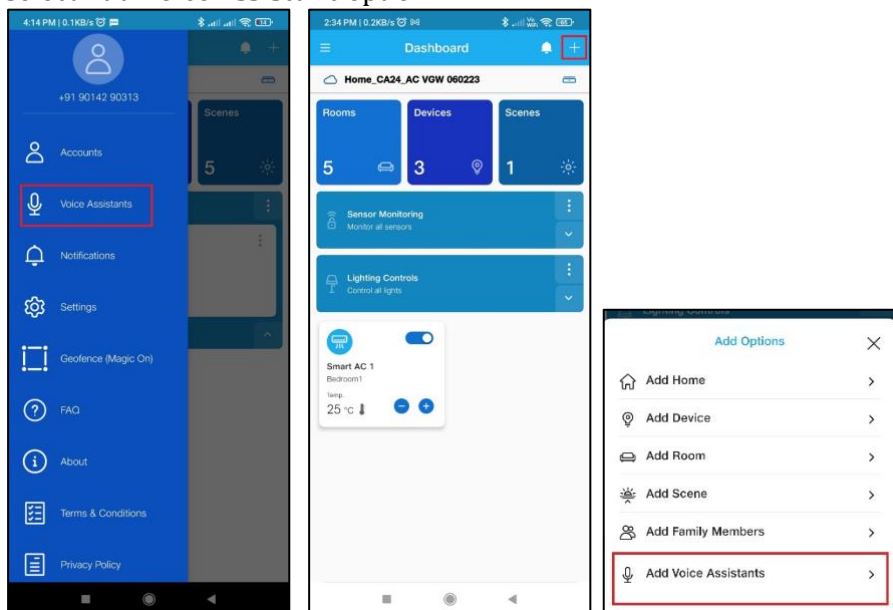
## 16 Adding Voice Assistant

You can enable Voice Assistant for your Smart Home devices to control it using voice commands.

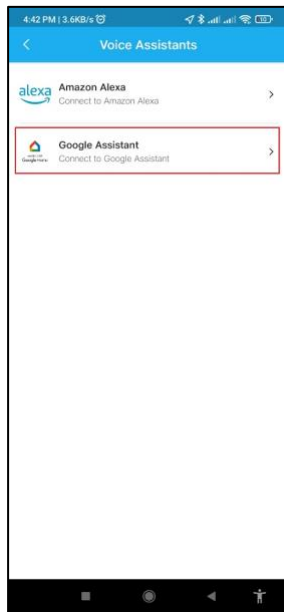
### 16.1 Adding Google Assistant

To add a Google Voice Assistant, follow these steps:

- 1) Go to **Side Menu > Voice Assistants**. **Voice Assistant** screen displays. Alternatively, on the **Dashboard** screen, you can tap **plus** icon on the top right corner and select **Add Voice Assistant** option.



- 2) Select the required Voice Assistant i.e. **Google Assistant**.



- 3) To add **Google** Voice Assistant, tap **Connect**. Select open with Google **Home** App.

**Note:** Before starting the process, install the Google **Home** app and login with your Google account.

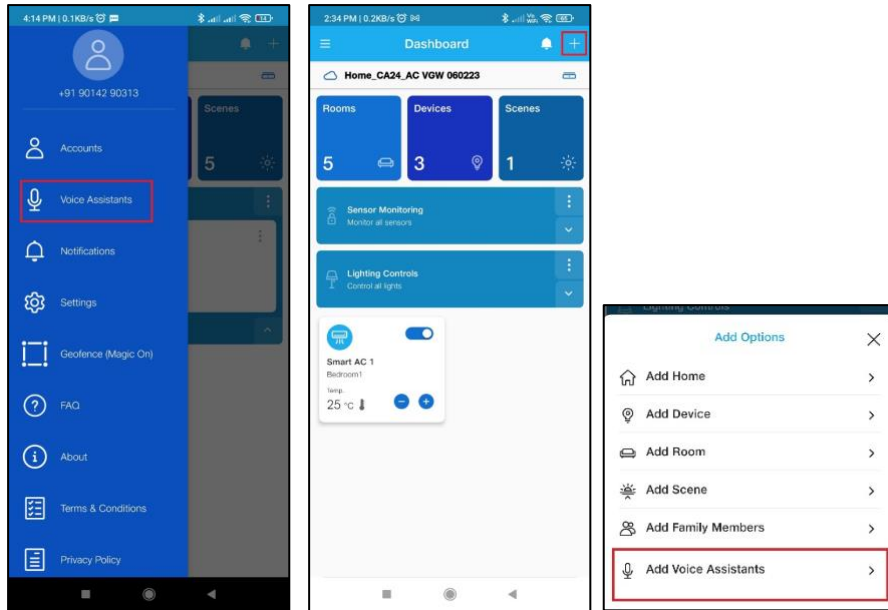
- 4) Follow the on-screen instructions to link the account.
- 5) Once linking is successful, you can use Google Assistant Voice commands to control the devices added in your account in the Kelvinator App. For example, "Hey Google, turn on the Hall AC". Ensure to call out exact device name.

## 16.2 Adding Amazon Alexa

To add Amazon Alexa, follow these steps:

- 1) Go to **Side Menu > Voice Assistants**. **Voice Assistant** screen displays. Alternatively, on the **Dashboard** screen, you can tap **plus** icon on the top right corner and select **Add Voice Assistant** option.





- 2) Select the required Voice Assistant i.e. **Amazon Alexa**



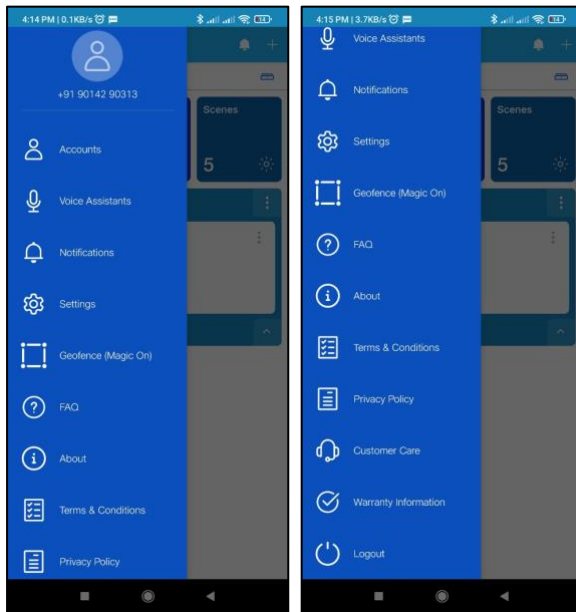
- 3) To add **Amazon Alexa** Voice Assistant, tap **Connect**. Select open with **Amazon Alexa** App.

**Note:** Before starting the process, install the **Amazon Alexa** App and login with your Amazon account.

- 4) Follow the on-screen instructions to link the account.  
 5) Once the linking is successful, you can use Alexa Voice commands to control the devices added in your account in the Kelvinator App. For example, *Alexa, turn on the Hall AC*. Ensure to call out exact device name.

## 17 Left Side Menu

To access Left Side Menu tap the  icon on the top left corner of the screen.



Options available under Side Menu are:

- **Accounts**
  - **Profile:** You can view your profile using this option.
  - **Admin Mode:** Tap this option to access Admin Mode. For more details, refer this section - [Accessing Admin Mode](#)
- **Voice Assistants:** To add Google and Alexa Voice Assistants. For more details, refer this section - [Adding Voice Assistant](#)
- **Notifications - Messages and Alerts:** For more details, refer this section - [Managing Notifications](#)
- **Settings:** This option will help you to access **Alerts Settings**. For more details, refer this section - [Managing Notifications](#)
- **Geofence (Magic On):** With this option, you can create Geofence which can be further used as **Trigger** while creating a Scene. For more details, refer this section - [Geofence \(Magic On\)](#)
- **FAQ:** This option will redirect you to the FAQs screen of the Kelvinator products.
- **About**
  - **App:** This option displays the current version of the Kelvinator App.
  - **Device:** This option displays device details added in the connected **Home**.
  - **Home:** This option displays details of the connected **Home**.
- **Terms & Conditions:** Displays Terms and Conditions document on the next screen.
- **Privacy Policy:** Displays Privacy Policy document on the next screen.
- **Customer Care:** Displays Email ID and Phone number of the Customer Care.
- **Warranty Information:** Displays Warranty information of the Kelvinator products on the next screen.
- **Logout:** Use this option to logout from your account.