



## TYPES OF GEOCACHES



### Traditional

The original geocache type consisting of, at minimum, a container and a logbook. Coordinates listed on a traditional cache page give the cache's exact location.



### Multi-Cache

A Multi-Cache involves two or more locations. Hints found at the initial location(s) lead to the final geocache, which is a physical container.



### Mystery or Puzzle Caches

Mystery or Puzzle Caches can involve complicated puzzles you will first need to solve to determine the coordinates of the cache.



### Event Cache

A geocaching event organized by local geocachers or geocaching organizations in the interest of discussing geocaching. Coordinates on the cache page indicate event location.

**GEOCACHING** is a real-world, outdoor treasure hunting game.

### Geocaching Live



Geocaching Live-enabled products work on your smartphone to bring geocaching to you, wherever you are. Visit [www.geocaching.com/live](http://www.geocaching.com/live) to find an application that transforms your smartphone into a geocaching-friendly GPS device.

### What is Geocaching?

Geocaching is a game that reveals a world beyond the everyday, where the possibility of a new discovery is just a short walk from where you are right now. The adventure begins by searching for cleverly hidden containers called geocaches. There are millions of geocaches worldwide that are waiting for you to find them.

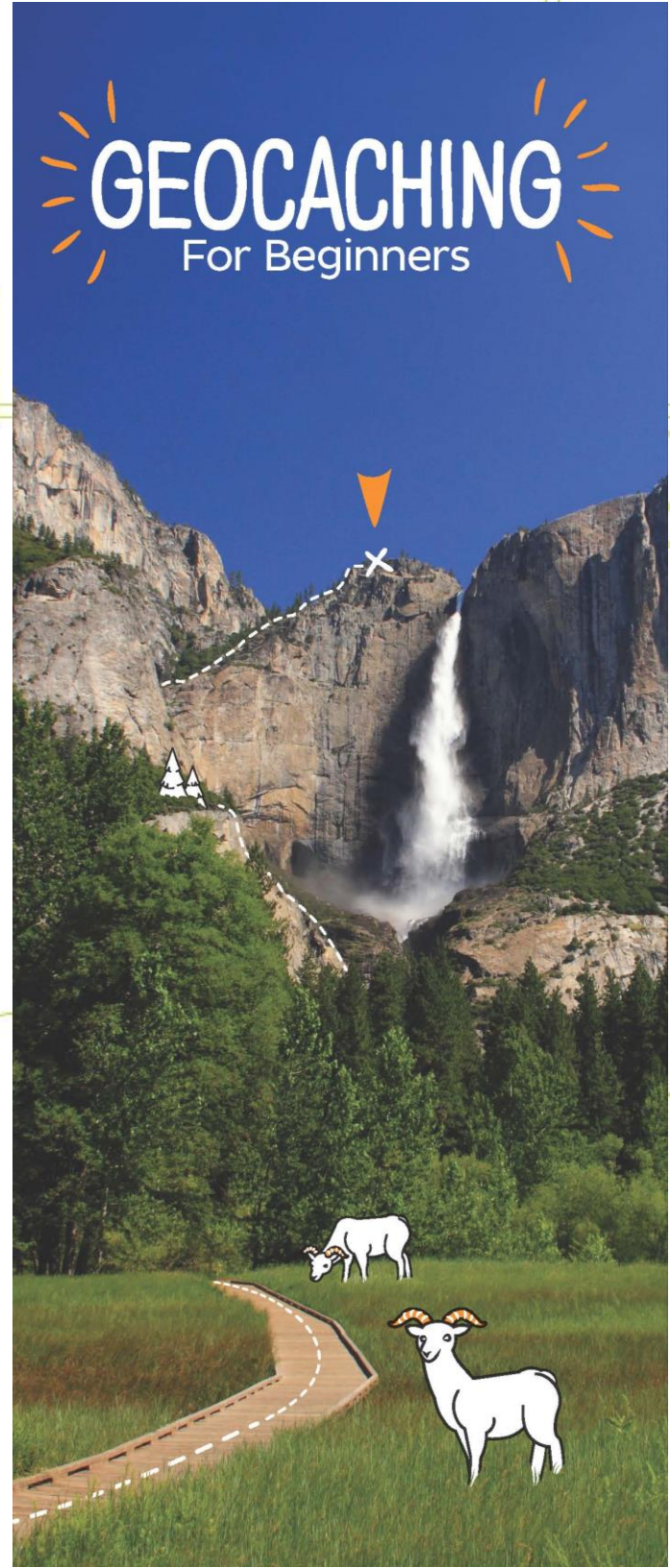
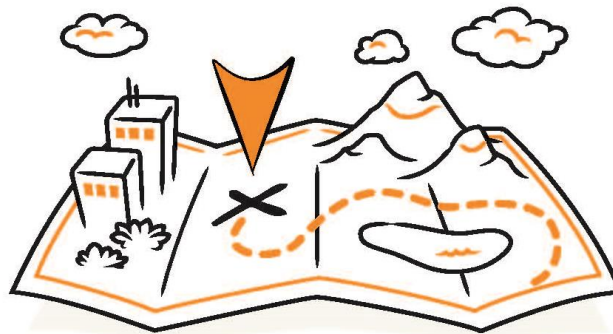
## CACHE IN TRASH OUT



Cache In Trash Out is a worldwide environmental clean-up effort supported by the geocaching community. Since 2002, geocachers have been dedicated to cleaning up parks and other cache-friendly places around the world.

Check the online event calendar to participate in organized clean-ups in your area.

For more information visit [www.geocaching.com/cito](http://www.geocaching.com/cito)







## GEOCACHING BASICS

### Before You Go

- Learn how to operate your GPS device and bring extra batteries.
- Select a geocache with terrain and difficulty ratings that will meet your goals. A (1/1) is easiest, a (5/5) the most difficult.
- Read the geocache description and don't forget the hints. It is also a good idea to bring a map.
- Remember that a geocache can take longer to find depending on environmental obstacles.
- Pack any needed supplies such as water, food and extra clothing.
- Invite friends and family with you; sharing the experience can be very rewarding.
- Let someone else know where you are going.

### On Your Way

- Mark your car or a trailhead as a waypoint to ensure your safe return.
- Rely on your eyes rather than your GPS device within 50 feet of the geocache location.
- Remember, geocaches are hidden in plain sight and never buried, but they are often very cleverly camouflaged.
- Be mindful of the environment; practice Cache In Trash Out.

### After the Find

- Sign the cache logbook.
- Leave the cache as you found it (hidden, of course).
- Share your geocaching stories and photos online at Geocaching.com.

## GEOCACHING IN 8 EASY STEPS

- 1 Go to [www.geocaching.com](http://www.geocaching.com) and register for a free account.
- 2 Visit the Geocaching.com homepage
- 3 Enter a location and click the magnifying glass to search.
- 4 Choose any geocache on the results page and click on its name.
- 5 Enter the coordinates of the geocache into your GPS device.
- 6 Use your GPS device to help you find the hidden geocache.
- 7 Sign the logbook and return the geocache to its original location.
- 8 Share your geocaching stories and photos online.



## DID YOU KNOW?

- \* There are active geocaches in 184 countries.
- \* There's a geocache hidden on the International Space Station in orbit 370 kilometers above Earth.
- \* The deepest geocache is located 2,300 meters below sea level.