



MESQUITE City Map

Published by the Mesquite Chamber of Commerce

ADVERTISING RATES AND SPECIFICATIONS

ADVERTISING RATES

	Non-Member Rate	Member Rate
Single	\$ 595	\$ 495
Double	\$ 895	\$ 795
Triple	\$ 1,395	\$ 1,295
Quad	\$ 1,795	\$ 1,695

Prime Positions

Panel 1 or Panel 2	\$ 1,995	\$ 1,895
Inside Back Cover	\$ 2,095	\$ 1,995
Inside Front Cover	\$ 2,295	\$ 2,195
Back Cover	\$ 2,395	\$ 2,295
Front Cover Sponsorship		SOLD
Ad Design Service (upon request)		
Single	\$ 75	
All Others	\$ 100	

CONTACT

Carol Kolson

Phone: (702) 346-2902

carol@mesquitenvchamber.com

MAKE CHECKS PAYABLE TO:

Mesquite Chamber of Commerce

MAIL PAYMENTS TO:

Mesquite Chamber of Commerce

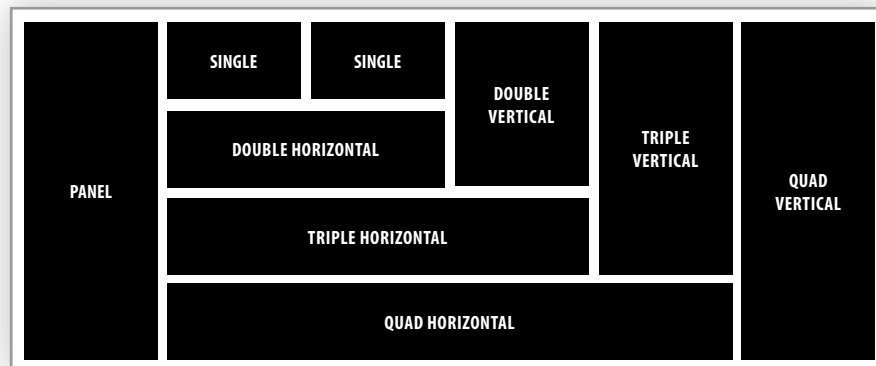
11 W Pioneer Blvd Suite C

Mesquite, NV 89027



We Accept Visa, MasterCard and American Express

MAP SIZE: 22" x 34"



DISPLAY ADVERTISING SIZES

Size		Width	Height
Panel		3.125"	8.000"
Quad	Vertical	3.125"	8.000"
	Horizontal	14.15"	1.875"
Triple	Vertical	3.125"	5.792"
	Horizontal	10.475"	1.875"
Double	Vertical	3.125"	3.917"
	Horizontal	6.500"	1.875"
Single	Horizontal	3.125"	1.875"

YOU CREATE THE AD

PLEASE SUBMIT ADS AS PRESS-QUALITY PDF

Preferred Formats

- 300 dpi PDF - High res PDF-X1/a, or a "Press-Quality" PDF for print. PDF file must contain only 4-color process images (CMYK).
- 300 dpi Flattened TIFF or JPG.

WE CANNOT ACCEPT MICROSOFT WORD, POWERPOINT OR PUBLISHER FILES.

Color

All colors must be CMYK.
No RGB, Pantone or spot colors.
All spot color should be converted to CMYK.

Tips For Making PDFs

When exporting PDFs, embed all fonts and images, export at high-resolution "Press Quality", 300 dpi or PDF-X1/a. No ads will have any bleeds. Avoid thin typefaces and hairline rules.

WE CREATE THE AD

AD DESIGN SERVICE

Single	\$ 75
All Others	\$ 100

We will create an ad for you from materials you supply to us.

Any photos, logos, artwork and text must be provided in an electronic form.

Photos, logos and artwork should be high resolution, 300 dpi or greater. Lower resolution may not reproduce well in print.

Graphics copies from websites are generally very low resolution and will not reproduce well in print.

Pay attention to copyrights. Do not use copyrighted material without the appropriate consents.

A proof of your ad will be sent by email for your approval prior to print.

SUBMITTING FILES

Please use the specifications provided. Make sure to include contact information with your cell phone number. Name the file with your company name.

1. Email Ad Art to:

production@chambermarketingpartners.com

Please e-mail your ad only if the total file size is less than 15 MB. We recommend placing all your files in one folder, then compressing the folder into a Zip file or Stuffit file before e-mailing.

2. Files Larger than 15MB

Send files larger than 15MB through www.WeTransfer.com. It's free and easy!

MESQUITE CHAMBER OF COMMERCE VISITOR & CITY MAP • AD SIZES

Advertise in the 2020 Mesquite Visitor & City Map and reach visitors, new residents and local businesses.

◆ **Extensive Distribution.**

Almost every day someone requests a map at the Chamber's office. 10,000 maps will be printed to meet those requests and given to Realtors, newcomers, chamber members, city offices among other high traffic places.

◆ **Affordable advertising for a full year.**

Ads large or small make your business visible to a large audience. Various ad prices available to match any budget.

**Put your business on
the map today!**

DISPLAY ADVERTISING SIZES

Size		Width	Height
Panel		3.125"	8.000"
Quad	Vertical	3.125"	8.000"
	Horizontal	14.15"	1.875"
Triple	Vertical	3.125"	5.792"
	Horizontal	10.475"	1.875"
Double	Vertical	3.125"	3.917"
	Horizontal	6.500"	1.875"
Single	Horizontal	3.125"	1.875"

PANEL or QUAD VERT	SINGLE	SINGLE	DOUBLE VERTICAL	TRIPLE VERTICAL
	DOUBLE HORIZONTAL			
	TRIPLE HORIZONTAL			
	QUAD HORIZONTAL			

Below are the most popular ad sizes at actual size.
Other sizes and orientations are to the left.

FULL PANEL
3.125" x 8"

**TRIPLE
VERTICAL**
3.125" x 5.792"

**DOUBLE
VERTICAL**
3.125" x 3.917"

SINGLE
3.125" x 1.875"

Advertising Insertion Order



Mesquite

Chamber of Commerce

Mesquite Chamber of Commerce

11 W. Pioneer Blvd., Suite C
Mesquite, NV 89027
www.mesquitenvchamber.com

IMPORTANT! Read All Contract Conditions Carefully. The Publisher Cannot Be Liable for Any Oral Agreements or Special Arrangements.

(1) All contracts subject to acceptance by Publisher. (2) This contract is with the Advertiser; change of ownership or management will not affect or modify contract obligations, nor will the assertion that the signature was made by an unauthorized employee of the Advertiser. (3) Failure to acknowledge or return proof will not alter contract payment terms or obligations. (4) In the event that payment is not made by Advertiser, in accordance with conditions of this contract, Publisher reserves the right to pursue remedy through use of an outside collection agency. (5) Publisher shall not be bound by any promises or agreements not contained herein, nor shall any such relieve Advertiser or agent or their obligations hereunder. (6) Publisher shall make reasonable attempts to match color requests, subject to technical limitations in the printing process. (7) Orders may not be cancelled once received at the Publisher's office. (8) Publisher cannot guarantee placement of advertisements unless specified on Insertion Order. (9) Advertisers and advertising agencies are liable for all content (including text, representation and illustrations) of advertisement and are responsible without limitation, for any and all claims made thereof against the Publisher, its officers, or employees.

☐ Special Production Instructions

Sales Rep _____

Order # _____

■ Publication: _____

Advertiser _____

Advertisement Authorized By _____

Address _____

City _____ State _____ Zip _____

Phone _____ Fax _____

E-mail _____

Additional Address: ☐ Mailing ☐ Billing ☐ Agency/Materials ☐ Proof ☐ Other

Attention _____

Firm _____

Address _____

City _____ State _____ Zip _____

Phone _____ Fax _____

E-mail _____

■ Map Insertion Order

☐ Single ☐ Double ☐ Triple ☐ Quad
☐ Outside Back Cover ☐ Inside Front Cover ☐ Inside Back Cover ☐ Inside Panel

Ad Location

☐ Map Side ☐ Cover Side | ☐ Vertical ☐ Horizontal

Ad Position

☐ Ad Supplied Electronically ☐ Design/Production by publishing partner CMP

Ad design rate: Single \$75 - All others \$100

Email Ad, Content or Questions to: production@chambermarketingpartners.com

Detailed artwork specification sheet available upon request.

■ Schedule of Charges

Ad Space Charge \$ _____

Additional Ad Space Charge \$ _____

Production Charge..... \$ _____

TOTAL Charges \$ _____

..... \$ _____

TOTAL \$ _____

Paid With Order \$ _____

BALANCE Due \$ _____

Please Make Checks Payable To: _____

11 W. Pioneer Blvd., Suite C, Mesquite, NV 89027

Pay by credit card in two ways:

1. The Chamber will mail an invoice or...
2. Pay now by going to www.mychamberad.com/mesquitecc
3. Enter your payment information (include the **Order #** found at the top of this sheet).
Your information will be securely transmitted to the Chamber for processing.

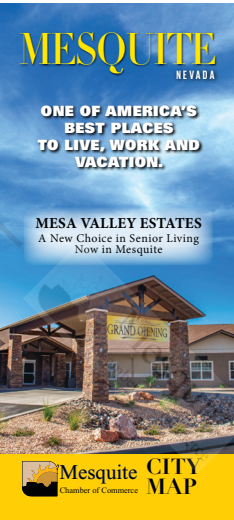
I HEREBY WARRANT THAT I HAVE READ THE CONTRACT CONDITIONS AND THAT I HAVE FULL POWER AND AUTHORITY TO SIGN FOR THE ABOVE-NAMED FIRM.

Signature & Title _____ Date _____

Please fax completed order to **866-931-6169** or email back to your sales person: _____

BACK COVER

SOLD



INSIDE FRONT COVER

PANEL 1
TOP INSIDE
LEFT

PANEL 2
TOP INSIDE
RIGHT

INSIDE BACK COVER

37

38

39

40

EDITORIAL

45

46

47

48

41

42

43

44

EDITORIAL



49

50

51

52

INDEX

SOLD	SOLD	SOLD	SOLD	SOLD	SOLD	9	SOLD	SOLD																		
11	12	13	14	SOLD	16	17	18	27																		
<div><div><h3>Sun City Map</h3></div><div><p>Map for only- placement only. New Cartography being created for project.</p><p>Mesquite</p><p>Map scale is approximately 1 inch = .35 miles. This graphic is intended for informational purposes only. Path: (702) 342-5235 • www.mesquitechamber.com Produced By the City of Mesquite GIS - January 2020</p></div></div> <tr><td>22</td><td>SOLD</td><td>24</td><td>25</td><td>26</td><td>35</td><td>34</td><td>33</td><td>32</td></tr> <tr><td>36</td><td>35</td><td>34</td><td>33</td><td>32</td><td>31</td><td>30</td><td>29</td><td>28</td></tr>									22	SOLD	24	25	26	35	34	33	32	36	35	34	33	32	31	30	29	28
22	SOLD	24	25	26	35	34	33	32																		
36	35	34	33	32	31	30	29	28																		