

Returning to Campus

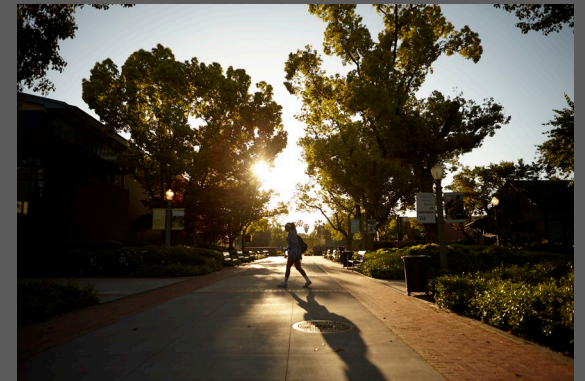
Safety Protocols & Program Modifications

As of 13 July 2020

Please note: The following information is subject to change and is not comprehensive. Our return to campus requires permission from government and health authorities and that decision is pending.



WESTRIDGE SCHOOL



Guiding Principles

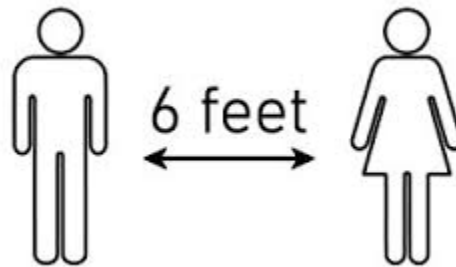
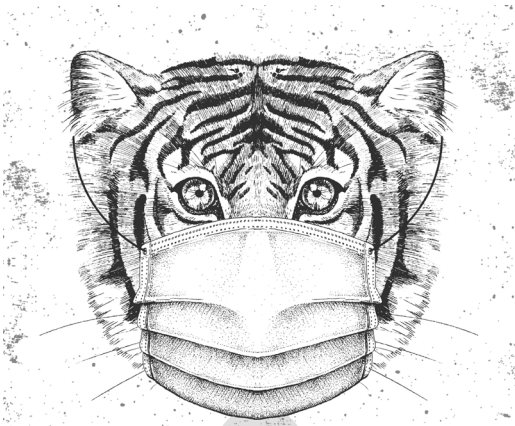
for a return to campus

- Lead all planning with the health, safety, and wellness of students, faculty, and staff as the top priority.
- Develop curricula and pedagogy that ensure an engaging educational experience whether delivered on-campus or remotely.
- Prioritize grades 4-7 in on-campus scheduling due to the developmental needs of this age group.
- Provide a full and equitable remote learning experience for students unable to return to campus due to health concerns.

Foundational Elements

of a safe program

- Masks required
- Physical distancing practiced
- Hybrid learning employed



Hybrid Learning

Hybrid learning combines periods of in-person learning with periods of remote learning. Our goal is to have students on campus as much as possible while maintaining stringent safety standards. This will require that a portion of the student body is off-campus in remote learning at any given time. We will prioritize grades 4-7 for on-campus scheduling due to the developmental needs of this age group.

All students will have the option to participate in our full program remotely.

Grades 4-7

- Due to the developmental needs of our youngest learners, we will prioritize on-campus time for these grades. Our goal is for them to be on-campus daily if possible while meeting safety requirements.
- Westridge will provide laptops for home use for grades 4 & 5.
- Assignments and class work for all classes will be centralized in a single online location. (Grades 4-6)
- The After School Program run by CEC will be available. (Grades 4-8)

Grades 8-12

- Each grade will be broken into cohorts which will alternate days on campus.
- Advisory will be held every day. (Grades 9-12)
- Regular grading scales will be in use. (Grades 7-12)

Updates to remote learning since the spring semester:

- Streamlined schedule (no rotating blocks, schedule remains the same whether in blended learning or need to shift to full remote for a period of time).
- Length of school day will be longer than in the spring/more reflective of a traditional schedule.
- The school will be embracing a teaching model in which classes will typically lead off with a class check-in followed by a mix of synchronous group learning, collaborative activities, and individual student work time.
- Explicit instruction for students on how asynchronous time should be used.
- Streamlined and more consistent posting of information and assignments.
- Reintroduction of grades for Middle School and Upper School.

Health & Safety

Westridge is working with health agencies and school and facilities industry safety experts to establish strict health and safety policies and practices for returning to campus during COVID-19. Protocols will follow guidance from the CDC, the State, and L.A. County and Pasadena Health Departments.

1. **Health & safety training** will be provided to all students, faculty & staff, and parents.
2. **Self-screening for COVID-19 symptoms** will be conducted by every employee and student each morning and reported to the school daily before coming to campus.
3. Students and adults will be required to wear **masks** while on campus, and the school will maintain a stock of masks in case a replacement is required during the day.

Health & Safety

4. **Handwashing stations** will be placed throughout campus and each classroom will be equipped with hand sanitizer.
5. **Physical distancing** of 6 feet will be required in classrooms and all areas of campus. To make this possible:
 - Classrooms will be reconfigured with reduced seating and non-teaching spaces will be used for classes.
 - Car line arrival and dismissal times will be staggered.
 - Foot-traffic patterns will be clearly marked on campus, including one-way flow where required.
6. **Population density** on campus will be reduced by:
 - Having groups of students in grades 8-12 on campus on alternate days (schedule options still being considered).
 - Limiting campus to students and faculty & staff (no unnecessary visitors).
 - Hosting most meetings & events virtually through the fall.

Health & Safety

7. Expanded **illness policies** will be strictly enforced.
8. An **isolation room** for students who become sick while at school will be established.
9. Cleaning and **disinfecting procedures** will be significantly expanded:
 - High-touch surfaces and restrooms cleaned multiple times throughout the day.
 - All campus rooms cleaned nightly.
 - Deeper cleaning of entire campus twice each week.
 - HVAC air filters compliant with EPA COVID-19 recommendations. For added protection, an air-scrubber system will be installed in all buildings.



Athletics & After School

Athletics:

Competitive athletics activity is governed by the California Interscholastic Federation (CIF) and the CIF-Southern Section (CIF-SS) office. The CIF-SS will be announcing the start dates for 2020-2021 sports seasons on July 20, 2020. CIF and CIF-SS will be using CDC, state, and local guidelines to inform their decision.

After School Program (LS & MS):

Our After School Program, run by the Child Education Center, will be available if we are able to return to campus. Health and safety guidelines from the school day will apply. Any changes to schedule and program will be provided before the start of school.

Dining Services

The Dining Commons will be organized differently than in typical years to ensure physical distancing and comply with all safety guidelines laid out by state and local health authorities. Though still being finalized, current planning includes:

- Pre-packaged meals will be delivered to students' classrooms to avoid large gatherings in the Commons.
- Online advanced ordering will minimize in-person contact and transactions.

