

Lenovo ThinkStation

Lenovo ThinkStation P4 Workstation Performance, Elevated

Lenovo



AMD
RYZEN
9000 Series

The Lenovo ThinkStation P4 is an entry tower workstation that sets a new performance benchmark for its class. Powered by AMD Ryzen™ PRO 9000 Series processors, it delivers the speed, responsiveness, and sustained performance required for demanding professional workflows, enabled by advanced thermals and liquid-cooling for higher-power CPU options. Featuring up to the NVIDIA RTX PRO™ 6000 Blackwell Generation GPU, the P4 provides exceptional compute and graphics performance for complex visual and data-intensive workloads. Built for consistency, reliability, and trust, the ThinkStation P4 tackles today's workloads and establishes a solid foundation to confidently scale for the demands of tomorrow.

Processor:

16 Cores
5.5GHz

AMD Ryzen™ PRO
9000 Series

Graphics:

96GB GDDR7
ECC VRAM

Up to RTX PRO™ 6000
Blackwell Workstation Edition GPU

ECC Memory:

256GB
DDR5

4 DIMM slots

Storage:

48TB
6 Drives

M.2 PCIe NVMe SSD and
3.5" SATA HDD

Features



AMD “Zen 5” Architecture

Up to 16 high-performance cores and 32 threads for responsive compute across complex modeling, rendering, simulation, and data-intensive tasks



Advanced Thermal Design

Maintain sustained performance under heavy workloads, with liquid cooling available for higher-power CPU options up to 170W



Future-Proof Expandability and I/O

PCIe Gen 5 support, modern I/O, and flexible expansion slots simplify upgrades and extend system longevity

Lenovo ThinkStation P4 Product Specifications[^]

Performance

Processor

Up to AMD Ryzen™ 9 PRO 9965X3D (up to 16 cores, up to 5.5GHz)

Chipset

AMD PRO 675

Graphics

Up to NVIDIA RTX PRO 6000 Blackwell Workstation Edition (96GB GDDR7 ECC VRAM)

AI

GPU: up to 4000 TOPS

Total Memory

Up to 256GB DDR5, up to 6400MT/s¹

Memory DIMM Capacity

16GB / 32GB ECC UDIMM

8GB / 16GB / 32GB / 48GB Non-ECC UDIMM

64GB Non-ECC CUDIMM

4 DIMM Slots

Storage Type Capacity

M.2 PCIe NVMe SSD up to 4TB

3.5" SATA HDD up to 12TB

Total Storage

Up to 6 total drives

Max M.2 = 3 (12TB)

Max 3.5" = 3 (36TB)

RAID

0/1/5

Power Supply

500W, 750W, 1100W (92% efficient)

Design

Dimensions (WxDxH)

180 x 401.5 x 415mm

7.09 x 15.81 x 16.34in

Weight

Starting at: 8.75kg (19.29lbs)

Connectivity

Front Ports

(1) Audio Combo Jack

(1) Microphone Jack

(1) USB-C® 3.2 Gen 2 (20Gbps)*

(2) USB-A 3.2 Gen 2 (10Gbps)*

(2) USB-A 3.2 Gen 1 (5Gbps)*

(1) 3-in-1 Media Card Reader²

Rear Ports

(4) USB-A 3.2 Gen 1 (5Gbps)*

(1) DisplayPort 2.0

(1) DisplayPort 1.4

(1) HDMI® 2.1

(1) RJ-45 2.5 Gigabit Ethernet

(1) Line out (3.5mm)

(1) DP/HDMI/Type-C/VGA²

(1) Serial²

(1) LPT²

WLAN + Bluetooth®

Foxconn MT7925 Wi-Fi 7 2*2be + Bluetooth 5.4³ PCIe 2230 module

Ethernet

Realtek RTL8125BP-CG, 2.5GbE, supports Wake-on-LAN

Optional Ethernet Adapters

Expansion Slots

(1) PCIe 5.0 x16

(1) PCIe 4.0 x4

(2) PCIe 4.0 x1

¹ Memory spec frequency listed; system support frequency may vary by configuration

² Optional

³ Bluetooth may be limited by OS

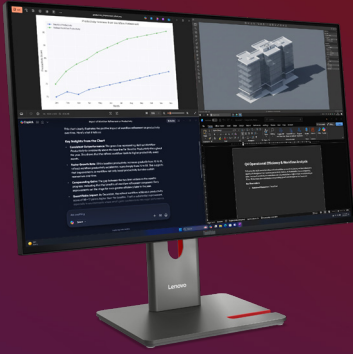
[^] For a full list of configuration details, specifications, and any limitations please visit: <https://psref.lenovo.com>

* USB port transfer speeds are approximate and depend on many factors, such as processing capability of host/peripheral devices, file attributes, system configuration and operating environments; actual speeds will vary and may be less than expected.

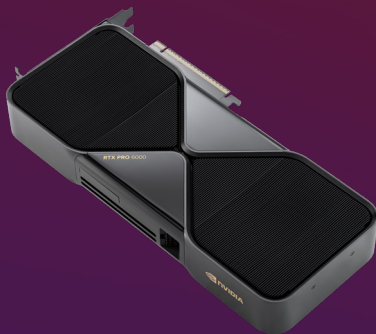
AMD
RYZEN
9000 Series

Lenovo

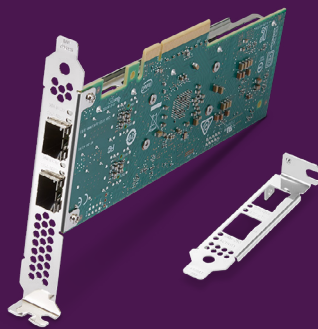
Lenovo Options & Accessories



ThinkVision P27Q-40



NVIDIA RTX PRO 6000
Blackwell Workstation Edition



Intel E810-DA2 10/25GbE
2-Port PCIe Ethernet Adapter



Scan for system overview, supported components, and technical specifications.

For a full list of accessories and options, please visit:
accsmartfind.lenovo.com

For more details on ThinkStation and ThinkPad, please visit:
lenovo.com/workstations

Visit us on social media:
[#lenovoworkstations](https://twitter.com/lenovoworkstations)



Lenovo ThinkStation P4 General Specifications[^]

Software

Operating System

Windows 11 Pro
Ubuntu[®] Linux[®]
Red Hat[®] Enterprise Linux

Windows Preloads

Lenovo Commercial Vantage

ISV Certifications

Including AVID[®], Altair[®], Autodesk[®], ANSYS[®], Bentley[®], Dassault[®], Nemetschek[®], PTC[®], Siemens[®]

For a complete list of ISV certifications visit
<https://thinkworkstations.com>

Security

ThinkShield

Discrete TPM 2.0
Kensington Security Slot
Chassis Intrusion Switch
E-Lock

Sustainability

Material

95% PCC ABS
95% PCC ABS wired USB keyboard/
mouse top/bottom cover
90% PCC recycled plastic EPE cushion
30% OBP used in bag
16% recycled SGCC
FSC certified paper in packaging

Certifications

ENERGY STAR[®] 9.0
EPEAT[®] Gold¹
TCO Certified 10
RoHS Compliant

Software Solutions

Lenovo Performance Tuner (LPT)

A free performance optimization tool designed for ThinkStation P and ThinkPad P Series workstations. It helps professionals get the most out of their hardware by dynamically adjusting system resources for demanding applications.

Linux

Lenovo delivers out-of-the-box Linux support by certifying the entire portfolio of ThinkStation and ThinkPad P Series workstations. This commitment prioritizes the needs of specialized users, guaranteeing a seamless and optimized Linux experience.

¹ EPEAT registered where applicable. EPEAT registration varies by country. See www.epeat.net for registration status by country.

[^] For a full list of configuration details please visit:
<https://psref.lenovo.com>

Smarter
technology
for all

Lenovo

AMD
RYZEN
9000 Series

Lenovo Solutions to Enhance Your Business Productivity

Lenovo offers solutions that help organizations run smoother and move faster. Lenovo Commercial Services reduce IT complexity, speed deployment, and keep devices optimized throughout their lifecycle. Lenovo ThinkShield delivers comprehensive, modern and resilient protection across every layer from supply chain to cloud, helping teams stay productive and compliant. Integrated into Lenovo Workstations, these solutions ensure that high-performance devices remain protected, optimized, and ready to meet the demands of modern workflows. The result is greater resilience and simpler management with less effort.

Lenovo Services



Protection & Support Services

Designed to help maintain and evolve the capabilities of your devices over their lifespan with flexible options for warranty extensions, Lenovo Protection & Support Services also help minimize unplanned operating and maintenance expenses, enhancing the budget predictability of your IT operations.

- Premier Support Plus
- Premier Support
- Accidental Damage Protection



Digital Workplace Solutions with Lenovo xIQ Digital Workplace Platform

Lenovo's comprehensive and flexible suite of Digital Workplace Solutions, powered by Gen AI technology, Lenovo xIQ Digital Workplace Platform creates a hyper-personalized experience that boosts employee satisfaction and productivity, automating workflows to streamline tasks and reduce IT strain.

- TruScale DaaS
- TruScale DaaS for Sustainability
- TruScale DaaS for AI PC
- Security Services
- Managed Services



AI Services

From strategy to scale, Lenovo helps you design, deploy, and manage secure AI solutions that align with your goals and deliver measurable ROI.

- AI Discover
- AI Adoption & Change Management

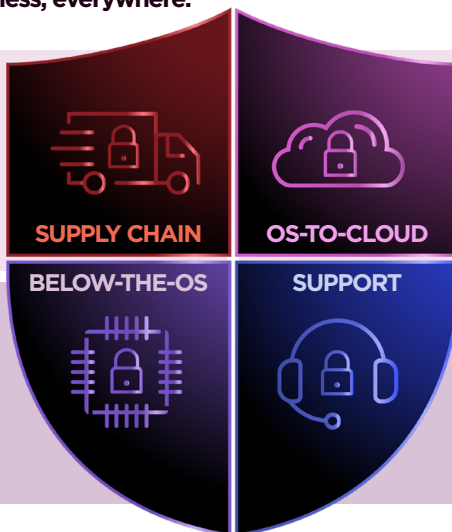
Security: Lenovo ThinkShield

Lenovo is committed to being our customer's most trusted technology supplier. ThinkShield delivers comprehensive, modern, and resilient solutions to defend your business.

Lenovo ThinkShield, protecting your business, everywhere.

Secure from the start

End-to-end supply chain protection with verifiable hardware and software assurance.



Smarter protection (AI+XDR)

AI-powered security that safeguards against ransomware, phishing, and data loss before they happen.

Integrity at every level

Fleet-wide firmware and hardware defense against rogue devices and advanced attacks.

Always on

Expert protection and support, seamlessly handled by one trusted partner, 24x7.

Fueled by delivering smarter technology for all, Lenovo ThinkShield is constantly evolving our hardware, software and services to provide reliable security solutions to defend your business—without compromising end-user productivity.

Learn more at [Lenovo.com/Services](https://lenovo.com/Services) and [Lenovo.com/ThinkShield](https://lenovo.com/ThinkShield)

May 2026 ©Lenovo. All rights reserved.

Lenovo is not responsible for photographic or typographic errors. Lenovo makes no representation or warranty regarding third-party products or services. LENOVO, ThinkStation, and ThinkPad are trademarks of Lenovo.

AMD Ryzen and Threadripper are trademarks of AMD Corporation or its subsidiaries. NVIDIA and NVIDIA RTX are trademarks and/or registered trademarks of NVIDIA Corporation in the U.S. and other countries. Intel is a trademark of the Intel Corporation. Linux is the registered trademark of Linus Torvalds in the U.S. and other countries. Ubuntu is a registered trademark of Canonical Ltd. Microsoft and Windows are registered trademarks of Microsoft Corporation. Other company, product, and service names may be trademarks or service marks of others.

AMD
RYZEN
9000 Series