

FIND YOUR FOREVER HOME WITH US



OAK & WILLOW  
*Builders Realty*

# *Our* STORY



We are passionate about making homeownership accessible and enriching the lives of families. Our dedication to this mission drives us to provide exceptional service and value to our clients.

"At Oak & Willow Builders, we believe everyone deserves a well-built home with thoughtful details that go beyond expectations. We are committed to delivering high-quality, affordably priced homes while continuously improving our designs and construction process. Our goal is to provide lasting value to homeowners, making the journey to homeownership simple, transparent, and rewarding. Through integrity, innovation, and a passion for homebuilding, we treat every buyer like family and build homes that stand the test of time."

We prioritize doing the right thing. Our transparent and honest approach ensures that your interests are always at the forefront.

*We will bring you home...*



*W Peet*

# OUR TEAM



## Jimmy Poole

Co-Owner - Realtor

- Manages & directs Realty company towards primary goals and objectives
- Leads & directs Oak & Willow Realty as an industry expert
- Oversee realty operations & delegates responsibilities to the BIC
- Licensed NC/SC realtor since 2018



## Sara Farrar

Co-Owner - Licensed General Contractor

- Licensed NC General Contractor with Building Classification
- Oversees all construction & building ops
- Provides effective leadership for the company
- Focus on scale & growth operations, synergy & collaboration between Builders, Realty, and Investment Teams



## Caleb Farrar

Co-Owner - CEO

- Oversees realty & building operations
- Ensures proper resources & strategic plans in place for business infrastructure
- Strategic director for brand & company growth



## Christina Brown

Client Relation Specialist & Designer

- Primary point of contact for clients, handling inquiries, addressing concerns, and providing timely and effective solutions.
- Collaborating with clients to understand their vision and requirements
- Coordinating with other departments to ensure completion of project



## Clyde Queen

Project Manager

- Schedule project milestones and ensure work progresses according to the set timeline.
- Coordinate with subcontractors, suppliers, and team members to ensure the availability of necessary materials and workforce
- Oversee construction activities to ensure compliance with safety regulations, codes, and quality standards.



## Phase 1 - Initial Consultation

- Discuss budget, timeline, and lot suitability
  - Select a floor plan from our available designs
- 

## Phase 2 - Site Evaluation & Preparation

- Land Assessment: Verify utilities, setbacks, grading needs.
  - Survey & Site Plan: Conduct a professional survey to confirm boundaries and placement
  - Permitting & Prep: Secure necessary permits and prepare the site for construction
- 

## Phase 3 - Design Selections

- Choose from pre-selected cabinet colors
  - Choose from pre-selected flooring options
- 

## Phase 4 - Construction Begins (Standard Build Process)

- Foundation & Framing: Pour foundation, frame structure
  - Roof & Exterior: Install roofing, siding, windows, doors
  - Interior Finishes: Drywall, painting, flooring, cabinetry
  - Final Touches: Fixtures, appliances, final inspections
- 

## Phase 5 - Design Selections

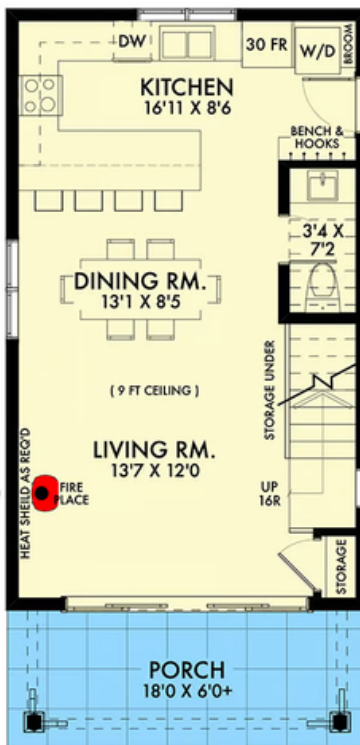
- Final quality check & walkthrough
- Receive home keys & warranty package

**BUILD ON YOUR  
LOT PROCESS**

*Call & Wilson*

# Floor Plan Option

## POPLAR



### Plan Details

- This 2-story cabin gives you 2 beds, 2.5 baths and 1,035 square feet of heated living. It has an attractive rustic exterior with board and batten siding and a welcoming 6'-deep front porch with sliders that open to the living room with fireplace.
- The main floor is open front to back with the kitchen with peninsula in back and the dining area in the middle all set under a 9' ceiling.
- By the side entrance, a well-placed bench with hooks is opposite the washer/dryer. A half bath completes the floor.
- Upstairs, the master suite is in front and has a walk-in closet while Bed 2 accesses the hall bath.

Est. Starting Price: \$175,000

For more information click on: [Poplar](#)



Heated S.F.

1,035



Beds

2



Baths

2.5

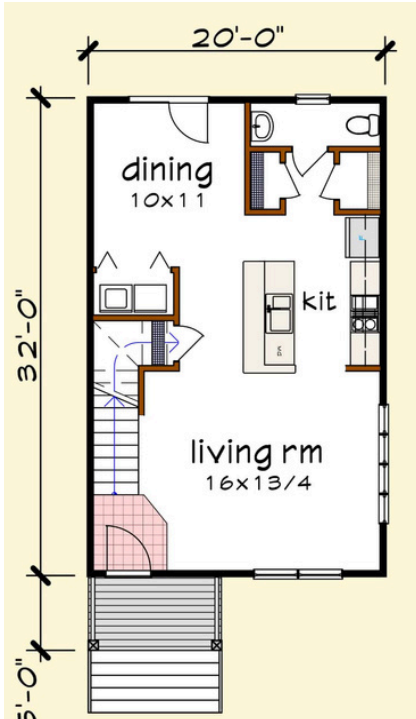


Stories

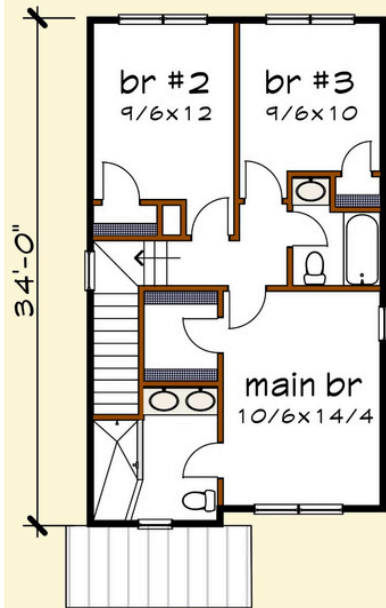
2

# Floor Plan Option

## ZOE



Floor 1 plan



Floor 2 plan

### Plan Details

- Spacious main level with 9-foot ceilings, offering a grand, airy feel.
- The primary bedroom is truly a retreat, featuring a dramatic 15-foot sloped ceiling that adds both height and elegance.
- The attached en-suite bathroom provides dual sinks, a beautifully tiled shower, and upscale finishes, providing a spa-like experience every day.
- The kitchen has quartz countertops, soft-close cabinets, and a herringbone-style tiled backsplash that adds a touch of sophistication.
- Designed with quality and functionality in mind, making it perfect for both everyday living and entertaining.

Est. Starting Price: \$185,000

For more information click on: [Zoe](#)



Heated S.F.

1,335



Beds

3



Baths

3



Stories

2

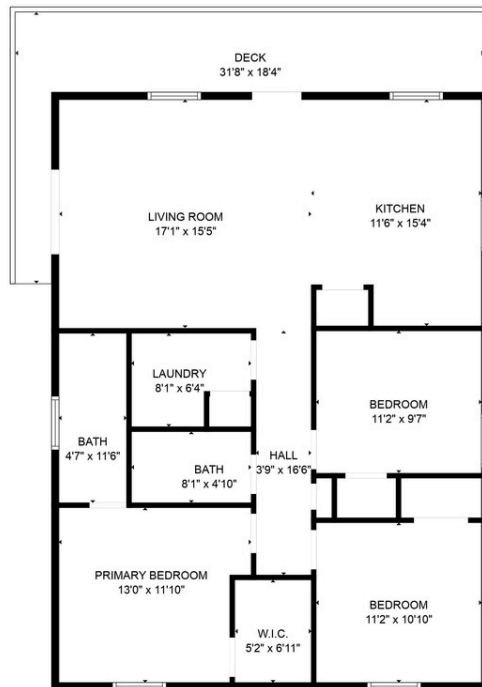
# Floor Plan Option

# HICKORY



## Plan Details

- This 3-bedroom, 2-bathroom home features an open concept layout with luxurious upgrades
- Including LVP flooring throughout, a stylish kitchen with stainless steel appliances, a tiled backsplash, soft close cabinets, and a pantry closet.
- The primary suite boasts a walk-in closet, a tiled shower, and dual sinks.



Est. Starting Price: \$190,000

For more information click on: [Hickory](#).



Heated S.F.

1,200



Beds

3



Baths

2



Stories

1

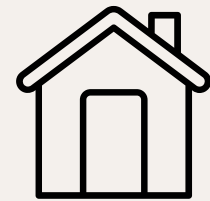
# Floor Plan Option

## MIKAH



### Plan Details

- Main floor is dedicated to living, dining, and creating wonderful family meals.
  - The kitchen/dining space includes a center island; great for prep work and gathering. There is a pantry nearby as well as the laundry space and, a rear located half bath is available for guests and family.
  - Storage space is located underneath the staircase and the second story landing fans out in different directions accessing the bedrooms and baths.
- There are two family bedrooms, both with good closet space and window views and an end cap shared bath is located down the hall.



Heated S.F.  
**1,394**



Beds  
**3**



Baths  
**2.5**



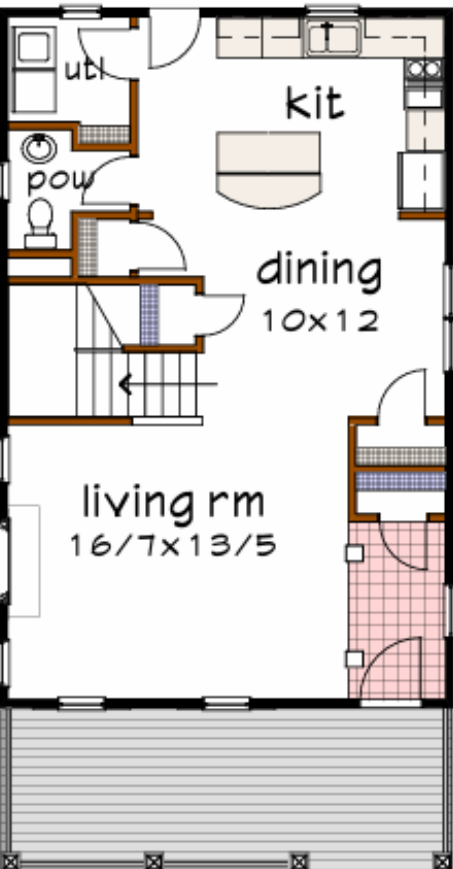
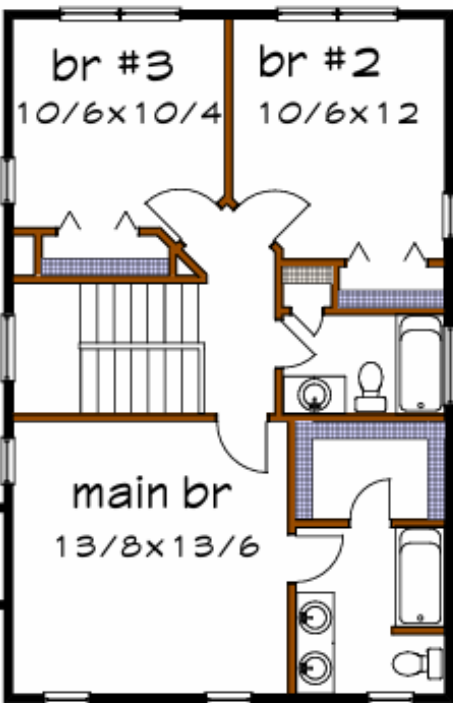
Stories  
**2**

Est. Starting Price: **\$200,000**

For more information click on: [Mikah](#)

# Floor Plan Option

# PINECREST



## Plan Details

- Spacious two-story layout designed for family living.
- Open-concept main level with large kitchen and dining area.
- Upstairs features private bedrooms and a functional landing space.
- Stylish exterior with classic farmhouse elements.

Est. Starting Price: \$205,000

For more information click on: [Pinecrest](#)



Heated S.F.

1,435



Beds

3



Baths

2.5

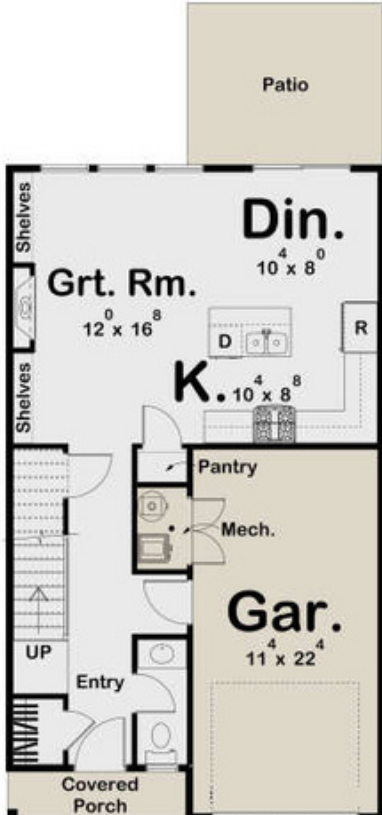
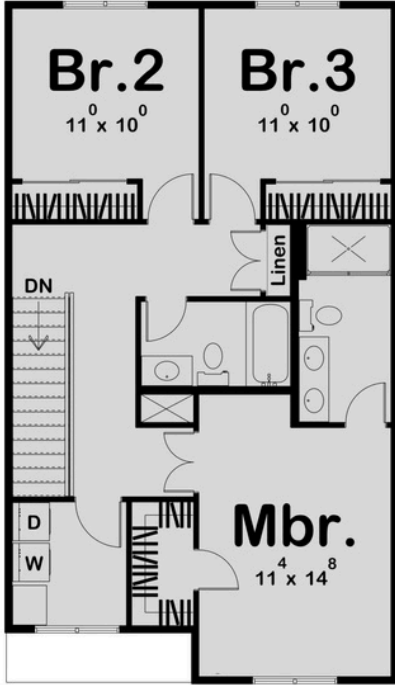


Stories

2

Floor Plan Option

# DOGWOOD



## Plan Details

- Modern farmhouse charm with a functional two-story layout.
- Open living space ideal for entertaining and everyday comfort.
- Private primary suite with luxurious ensuite and walk-in closet.
- Convenient upstairs laundry near bedrooms.

Est. Starting Price: \$210,000

For more information click on: [Dogwood](#)



Heated S.F.

1,464



Beds

3



Baths

2



Stories

2

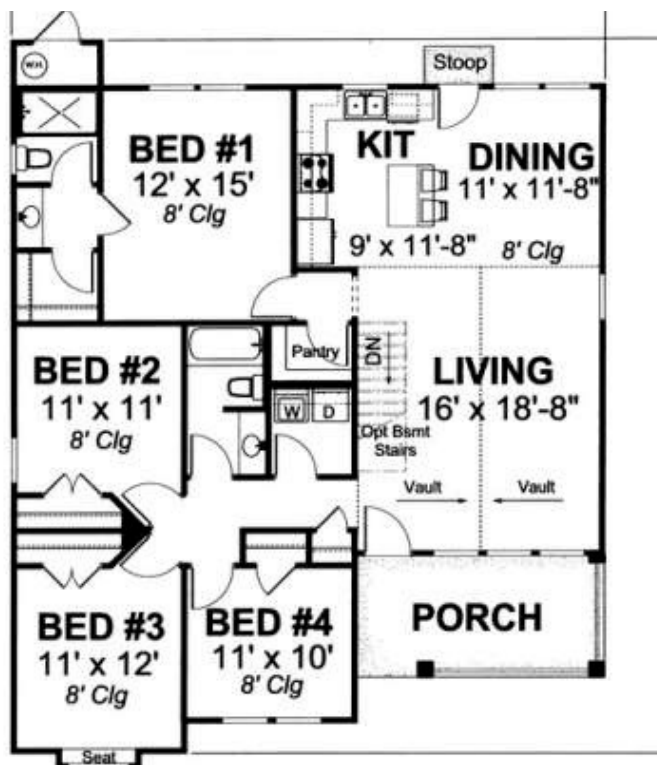
*Floor Plan Option*

# CEDAR GLEN



## Plan Details

- Spacious single-level living perfect for families.
- Four bedrooms provide flexibility for guests or home office.
- Open concept layout connects kitchen, dining, and living.
- Walk in laundry and pantry rooms



Est. Starting Price: \$210,000

For more information click on: [Cedar Glen](#)



Heated S.F.

1,481



Beds

4



Baths

2.5

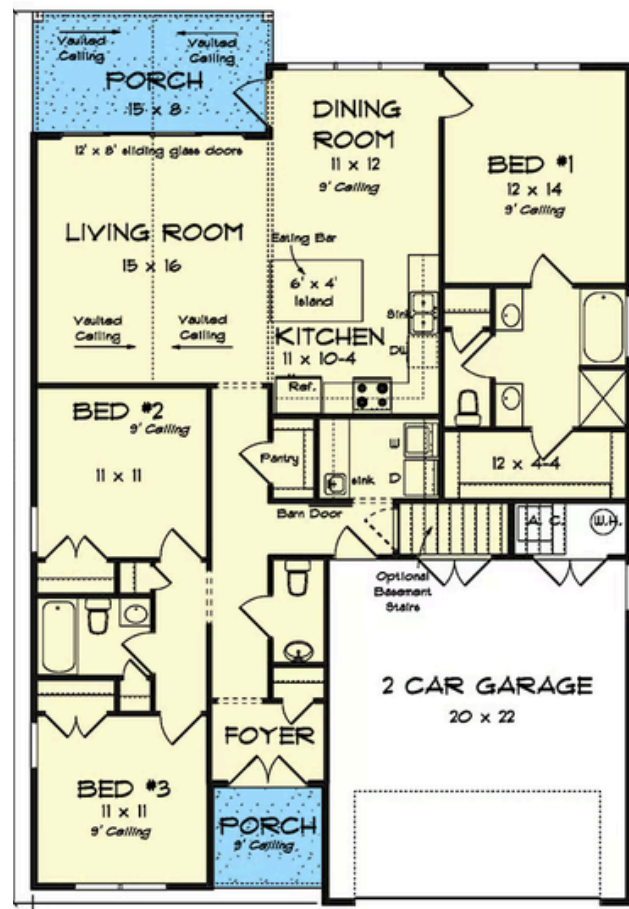


Stories

1

# Floor Plan Option

## PECAN



### Plan Details

- This one-level Country home plan delivers a front-facing garage considerate of smaller lots.
- The combined living room, kitchen, and dining area brings the family together, crowned by a vaulted ceiling that extends onto a 15' by 8' covered porch.
- The primary bedroom is tucked behind the double garage and paired with a 5-fixture bathroom and walk-in closet.

Est. Starting Price: \$250,000

For more information click on: [Pecan](#)



Heated S.F.

1,483



Beds

3



Baths

2.5



Stories

1

# Floor Plan Option

# YORKTOWN



## Plan Details

- Featuring vaulted ceilings and a spacious open floor plan, the kitchen shines with a large island, a custom range hood, and a built-in microwave and mini fridge tucked into the walk-in pantry.
- The luxurious primary suite includes a tiled shower, a freestanding soaking tub, and premium finishes for a spa-like retreat.
- A pot filler above the stove adds convenience, while thoughtful touches throughout make this home as practical as it is beautiful



Est. Starting Price: \$275,000

For more information click on: [Yorktown](#)



Heated S.F.

1,810



Beds

3



Baths

2



Stories

1

# Floor Plan Option

## ELMWOOD



### Plan Details

- The vaulted living area offers an airy, open feel, while 10-foot ceilings throughout and an 11-foot tray ceiling in the primary suite add elegance.
- The gourmet kitchen features a 60 sq. ft. island, upgraded quartz countertops, double ovens, a 36-inch cooktop, and a pantry with a built-in microwave.
- The spa-like primary bath boasts a separate soaking tub



Est. Starting Price: **\$375,000**

For more information click on: [Elmwood](#)



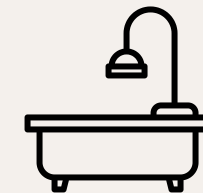
Heated S.F.

**2,243**



Beds

**4**



Baths

**2**



Stories

**1**

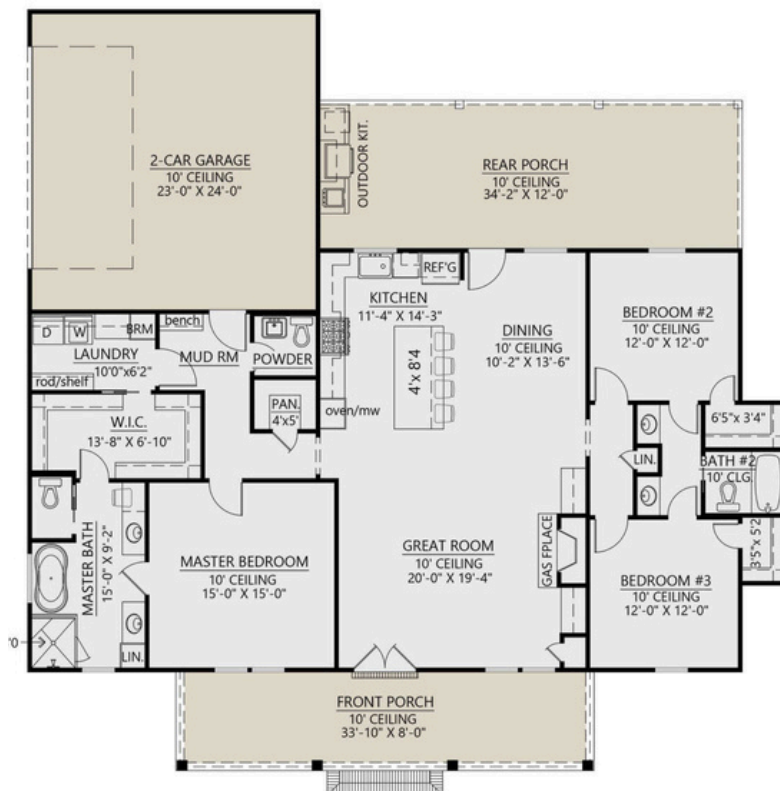
# Floor Plan Option

## REDWOOD



### Plan Details

- Vaulted ceilings and open layout create a spacious feel.
- Chef-inspired kitchen with walk-in pantry and large island.
- Primary suite features spa-like bath with freestanding tub.
- Large covered porch perfect for outdoor living.



Est. Starting Price: \$400,000

For more information click on: [Redwood](#)



Heated S.F.  
**1,924**



Beds  
**3**



Baths  
**2.5**



Stories  
**1**

# Floor Plan Option

# SYCAMORE



## Plan Details

- Country farmhouse design with timeless curb appeal.
- Expansive living area with vaulted ceilings and natural light.
- Luxurious kitchen and thoughtful storage throughout.
- Private primary retreat



Est. Starting Price: \$400,000

For more information click on: [Sycamore](#)



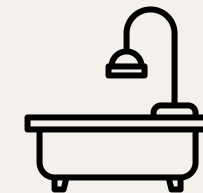
Heated S.F.

1,993



Beds

3



Baths

2.5



Stories

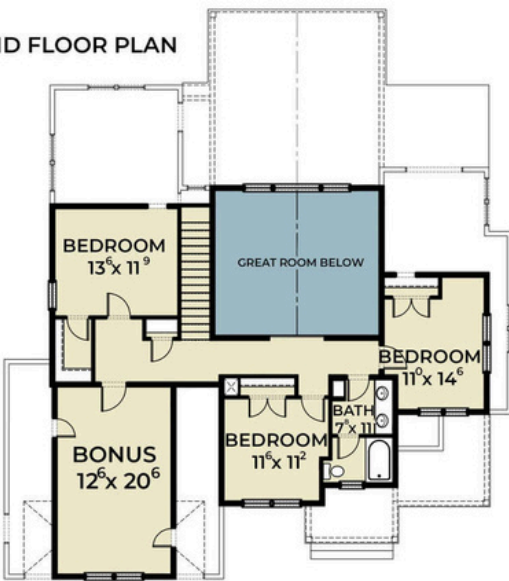
1

# Floor Plan Option

# RIVER BIRCH



SECOND FLOOR PLAN



MAIN FLOOR PLAN



## Plan Details

- Classic modern farmhouse with plenty of space for family life.
- Kitchen includes large island and walk-in pantry.
- Second-floor bedrooms offer privacy from main living areas.
- Inviting exterior and covered porches for indoor-outdoor living.



Heated S.F.

2,343



Beds

4



Baths

2.5



Stories

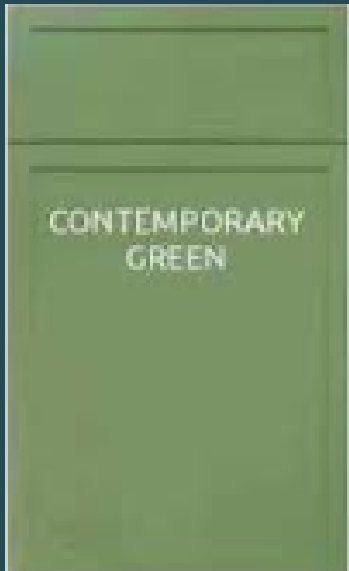
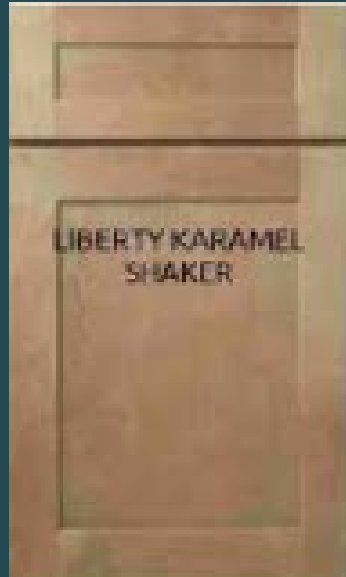
2

Est. Starting Price: \$425,000

For more information click on: [River Birch](#)



# Kitchen Cabinet Options



- METAL BRACKET REINFORCEMENT FOR BASE CABINETRY
- 1/2" THICK CABINET GRADE PLYWOOD BOX
- STEEL CONCEALED UNDER MOUNT FULL-EXTENSION SOFT-CLOSE DRAWER GLIDES
- UV-COATED NATURAL INTERIORS
- 3/4" ADJUSTABLE PLYWOOD SHELVES
- 5-PIECE WOOD DRAWER FRONT CONSTRUCTION
- DOVETAIL DRAWERS WITH 5/8" THICK SOLID WOOD SIDE
- 3/4" FULL OVERLAY SOLID BIRCH DOORS MDF CENTER PANEL
- 6-WAY ADJUSTABLE CONCEALED EUROPEAN SOFT CLOSE HINGE
- 4 1/2" HIGH, 1/2 THICK PLYWOOD TOE KICK

Image: National Oak

**PLANK SIZE**

9 3/8"x 60"

**THICKNESS**

10mm (8mm + 2mm Pad)

**WEAR SURFACE**

AC 4

**CARTON SIZE**

27.44

**INSTALLATION**

uni drop

**PROFILE**

four sided painted bevel

**CORE**

waterproof wood

**WARRANTIES**

Limited Lifetime Waterproof Warranty

Limited Lifetime Petproof Warranty

Limited Lifetime Residential Warranty

5 Year Limited Light Commercial Warranty



BELMONT OAK PWP61037

BERKSHIRE PWP61025

COTTAGE MAPLE PWP61011

EVERGLADES PWP61041

IVY HILL PWP61096



**ECO FRIENDLY**



Image: Cottage Maple

**LODGE MAPLE PWP61013**

**NATIONAL OAK PWP61093**

**OAK HILL PWP61031**

**OAKMONT PWP61042**

**RIVER OAK PWP61033**

# FROM US TO YOU

*Oak & Willow*

We are excited to embark on this journey with you!

Finding the perfect home or investment property isn't just about the search—it's about having the right team by your side.

Here's why Oak & Willow is the smart choice:

Exceptional Properties – From custom builds to charming resale homes, we connect you with the best options.

Expert Guidance – Our experienced team helps you navigate the market with confidence.

Affordable Solutions – Dream homes don't have to break the bank! We find options that fit your budget.

Outstanding Service – We're committed to making your buying or selling experience smooth and stress-free.

We look forward to working with you!

E-mail: [build@oakandwillowbuilders.com](mailto:build@oakandwillowbuilders.com)

Phone Number:

Address: 262 W Main St Suite C Gastonia NC 28052

Home is where the heart is ...



# Oak & Willow NEXT STEPS

---

## Checklist of items needed to start...

### Your Homebuilding Journey: Next Steps Checklist

#### 1. Initial Consultation

• Schedule a meeting with Oak & Willow Builders • Share your desired budget and ideal timeline • Talk through location, lot ownership (or lot search if needed)

#### 1. Choose Your Floor Plan

• Review our curated collection of floor plans • Select a design that fits your lifestyle and needs • Consider desired square footage, number of beds/baths, and style

#### 1. Site Evaluation (if you have land)

• Provide address and plat or survey (if available) • Confirm utility availability, zoning, and any restrictions • Schedule a site walk or lot review with our team

#### 1. Customize Your Home

• Select cabinet, flooring, paint, and exterior finishes • Discuss optional upgrades or layout tweaks • Finalize your design selections with our in-house team

#### 1. Secure Financing (if applicable)

• Connect with one of our preferred lenders (or use your own) • Get pre-approved for your build budget • Review payment schedule and construction draw process

#### 1. Sign Your Build Agreement

• Review and sign contract with clear terms and timelines • Submit any required deposits

#### 1. Let's Build!

• Receive construction timeline and regular updates • Stay in touch with your project manager for walkthroughs and progress



---

Ready to Start the Process? Click the link below:

[New Client Form](#)

*A house is made of walls and beams: A home is built with love and dreams!*