



6200 | SPACE #3A

VARIEL AVENUE

WOODLAND HILLS, CA



FOR LEASE | 3,129 SF

RETAIL SPACE AT THE Q | PRIME WOODLAND HILLS LOCATION

YAIR HAIMOFF, SIOR
Executive Managing Director
818.203.5429
yhaimoff@spectrumcre.com
CA DRE Lic. #01414758

ZACHARY RABINOWITZ
Senior Associate
310.487.4224
zrabinowitz@spectrumcre.com
CA DRE Lic. #02081281

No warranty, express or implied, is made as to the accuracy of the information contained herein. This information is submitted subject to errors, omission, change of price, rental or other conditions, withdrawal without notice, and is subject to any special listing conditions imposed by our principals. Cooperating brokers, buyers, tenants and other parties who receive this document should not rely on it, but should use it as a starting point of analysis, and should independently confirm the accuracy of the information contained herein through a due diligence review of the books, records, files and documents that constitute reliable sources of the information described herein. Spectrum Commercial Real Estate, Inc. CA DRE #02042805

SPECTRUM
COMMERCIAL REAL ESTATE, INC.
spectrumcre.com | 818.252.9900



ADDRESS

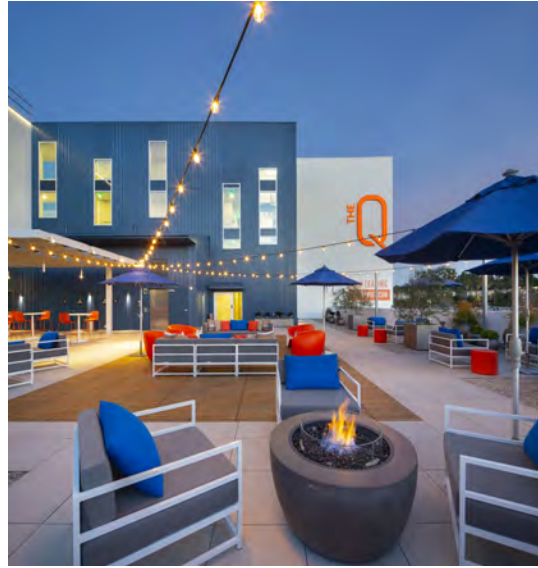
6200 VARIEL AVENUE
WOODLAND HILLS, CA 91367

SIZE

3,129 SF

PROPERTY FEATURES

- High-Image Retail / Restaurant Space
- Situated at the Q Variel
– 245 Unit Luxury Apartment Community
- Open Floorplan
- Floor to Ceiling Glass
- Excellent Signage Opportunity
- Valet & Covered Parking with EV Charging Stations



LOCATION HIGHLIGHTS

- Highly Desired Woodland Hills Location
Adjacent to Warner Center
- Excellent Demographics
- Minutes from Westfield Topanga, The Village,
Pierce College, Kaiser Permanente, Hotels, New
Ram’s Training Facility and Freeway Onramp



YAIR HAIMOFF, SIOR

Executive Managing Director
818.203.5429
yhaimoff@spectrumcre.com
CA DRE Lic. #01414758

ZACHARY RABINOWITZ

Senior Associate
310.487.4224
zrabinowitz@spectrumcre.com
CA DRE Lic. #02081281

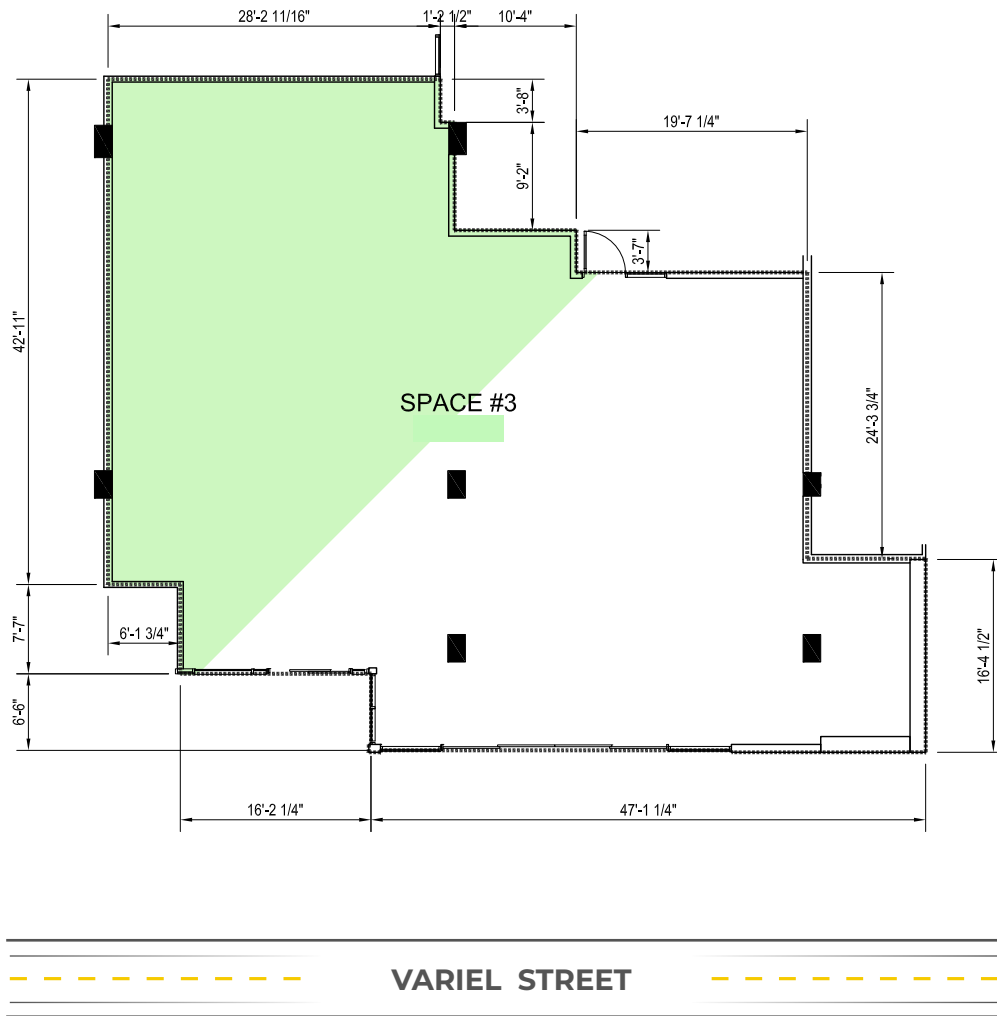
No warranty, express or implied, is made as to the accuracy of the information contained herein. This information is submitted subject to errors, omission, change of price, rental or other conditions, withdrawal without notice, and is subject to any special listing conditions imposed by our principals. Cooperating brokers, buyers, tenants and other parties who receive this document should not rely on it, but should use it as a starting point of analysis, and should independently confirm the accuracy of the information contained herein through a due diligence review of the books, records, files and documents that constitute reliable sources of the information described herein. Spectrum Commercial Real Estate, Inc. CA DRE #02042805

SPECTRUM

COMMERCIAL REAL ESTATE, INC.

spectrumcre.com | 818.252.9900

FLOOR PLAN



YAIR HAIMOFF, SIOR
 Executive Managing Director
 818.203.5429
 yhaimoff@spectrumcre.com
 CA DRE Lic. #01414758

ZACHARY RABINOWITZ
 Senior Associate
 310.487.4224
 zrabinowitz@spectrumcre.com
 CA DRE Lic. #02081281

No warranty, express or implied, is made as to the accuracy of the information contained herein. This information is submitted subject to errors, omission, change of price, rental or other conditions, withdrawal without notice, and is subject to any special listing conditions imposed by our principals. Cooperating brokers, buyers, tenants and other parties who receive this document should not rely on it, but should use it as a starting point of analysis, and should independently confirm the accuracy of the information contained herein through a due diligence review of the books, records, files and documents that constitute reliable sources of the information described herein. Spectrum Commercial Real Estate, Inc. CA DRE #02042805

SPECTRUM
 COMMERCIAL REAL ESTATE, INC.
 spectrumcre.com | 818.252.9900



THE Q

NEIGHBORING TENANTS

MY SALON
Suite



JINYA Holdings Inc.

Active
Stronger brain. Healthier body.

CURO
PET CARE

YAIR HAIMOFF, SIOR
Executive Managing Director
818.203.5429
yhaimoff@spectrumcre.com
CA DRE Lic. #01414758

ZACHARY RABINOWITZ
Senior Associate
310.487.4224
zrabinowitz@spectrumcre.com
CA DRE Lic. #02081281

No warranty, express or implied, is made as to the accuracy of the information contained herein. This information is submitted subject to errors, omission, change of price, rental or other conditions, withdrawal without notice, and is subject to any special listing conditions imposed by our principals. Cooperating brokers, buyers, tenants and other parties who receive this document should not rely on it, but should use it as a starting point of analysis, and should independently confirm the accuracy of the information contained herein through a due diligence review of the books, records, files and documents that constitute reliable sources of the information described herein. Spectrum Commercial Real Estate, Inc. CA DRE #02042805

SPECTRUM
COMMERCIAL REAL ESTATE, INC.
spectrumcre.com | 818.252.9900



YAIR HAIMOFF, SIOR
 Executive Managing Director
 818.203.5429
 yhaimoff@spectrumcre.com
 CA DRE Lic. #01414758

ZACHARY RABINOWITZ
 Senior Associate
 310.487.4224
 zrabinowitz@spectrumcre.com
 CA DRE Lic. #02081281

No warranty, express or implied, is made as to the accuracy of the information contained herein. This information is submitted subject to errors, omission, change of price, rental or other conditions, withdrawal without notice, and is subject to any special listing conditions imposed by our principals. Cooperating brokers, buyers, tenants and other parties who receive this document should not rely on it, but should use it as a starting point of analysis, and should independently confirm the accuracy of the information contained herein through a due diligence review of the books, records, files and documents that constitute reliable sources of the information described herein. Spectrum Commercial Real Estate, Inc. CA DRE #02042805

SPECTRUM
 COMMERCIAL REAL ESTATE, INC.
 spectrumcre.com | 818.252.9900

DEMOGRAPHIC DATA



POPULATION

	1 MILE	3 MILES	5 MILES
Estimated Population	33,177	213,234	417,120
Estimated Households	15,782	77,041	151,240



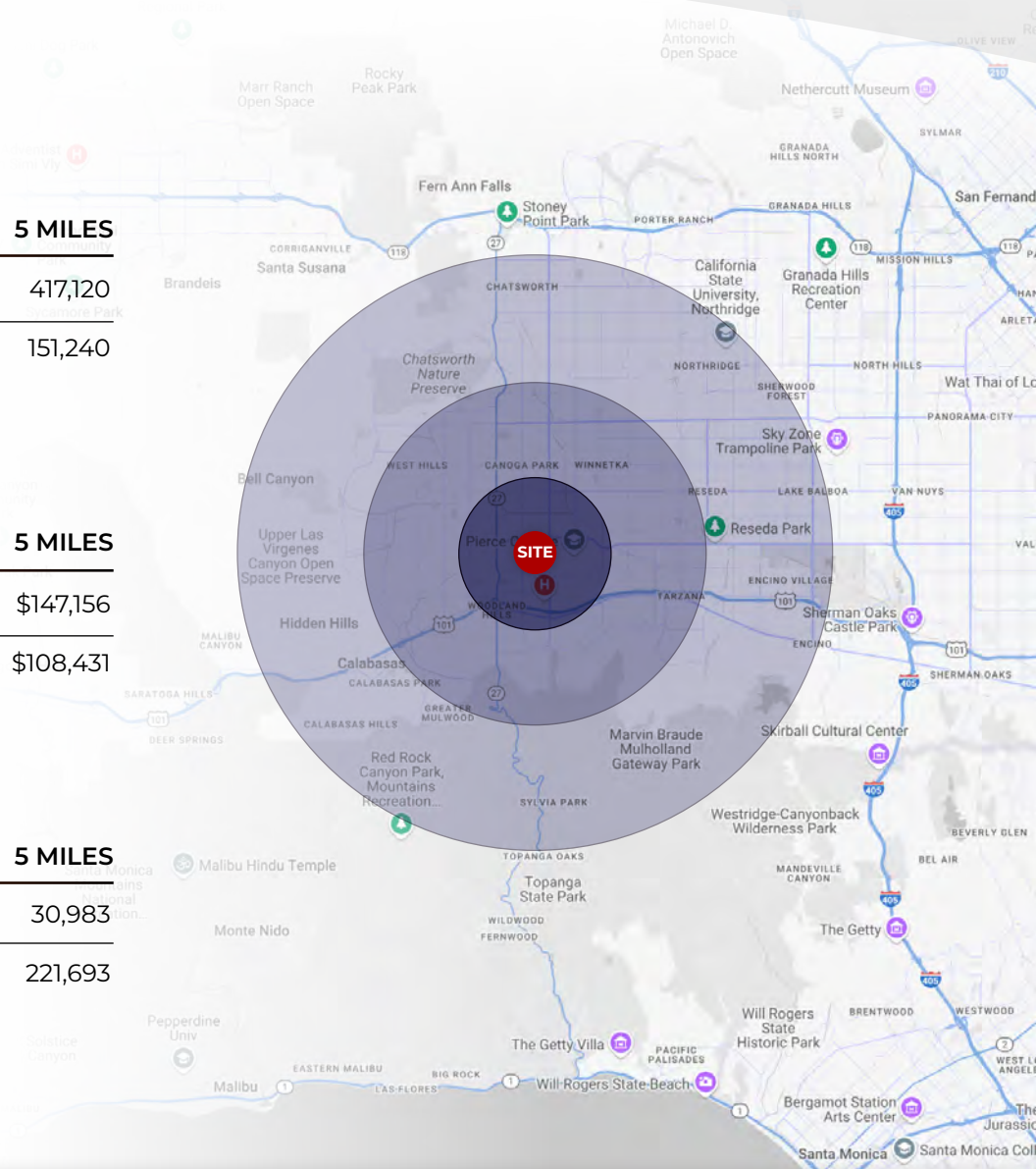
HOUSEHOLD INCOME

	1 MILE	3 MILES	5 MILES
Average Household Income	\$117,020	\$140,160	\$147,156
Median Household Income	\$90,656	\$106,178	\$108,431



DAYTIME POPULATION

	1 MILE	3 MILES	5 MILES
Total Businesses	3,389	15,599	30,983
Total Employees	38,216	104,883	221,693



YAIR HAIMOFF, SIOR
 Executive Managing Director
 818.203.5429
 yhaimoff@spectrumcre.com
 CA DRE Lic. #01414758

ZACHARY RABINOWITZ
 Senior Associate
 310.487.4224
 zrabinowitz@spectrumcre.com
 CA DRE Lic. #02081281

No warranty, express or implied, is made as to the accuracy of the information contained herein. This information is submitted subject to errors, omission, change of price, rental or other conditions, withdrawal without notice, and is subject to any special listing conditions imposed by our principals. Cooperating brokers, buyers, tenants and other parties who receive this document should not rely on it, but should use it as a starting point of analysis, and should independently confirm the accuracy of the information contained herein through a due diligence review of the books, records, files and documents that constitute reliable sources of the information described herein. Spectrum Commercial Real Estate, Inc. CA DRE #02042805

SPECTRUM
 COMMERCIAL REAL ESTATE, INC.
 spectrumcre.com | 818.252.9900



6200 | SPACE #3A

VARIEL AVENUE

WOODLAND HILLS, CA



YAIR HAIMOFF, SIOR

Executive Managing Director
818.203.5429
yhaimoff@spectrumcre.com
CA DRE Lic. #01414758



ZACHARY RABINOWITZ

Senior Associate
310.487.4224
zrabinowitz@spectrumcre.com
CA DRE Lic. #02081281

SPECTRUM
COMMERCIAL REAL ESTATE, INC.

spectrumcre.com | 818.252.9900

No warranty, express or implied, is made as to the accuracy of the information contained herein. This information is submitted subject to errors, omission, change of price, rental or other conditions, withdrawal without notice, and is subject to any special listing conditions imposed by our principals. Cooperating brokers, buyers, tenants and other parties who receive this document should not rely on it, but should use it as a starting point of analysis, and should independently confirm the accuracy of the information contained herein through a due diligence review of the books, records, files and documents that constitute reliable sources of the information described herein. Spectrum Commercial Real Estate, Inc. CA DRE #02042805